

AN ETHOS OF CULTURAL AND SOCIAL SUSTENANCE FOR LOWERTOWN WEST OTTAWA

MELISSA STICKL, B. A. S.

SESSION 5A: THE OTHER PILLARS
HERITAGE CANADA FOUNDATION
FAIRMONT ROYAL YORK, TORONTO, ON
SATURDAY, SEPTEMBER 26, 2009

‘IN-TRANSITION’
*TOWARDS AN ETHOS OF SUSTENANCE
FOR OUR LADY SCHOOL*

A MASTER OF ARCHITECTURE THESIS
PRESENTED TO
CARLETON UNIVERSITY,
OTTAWA, ON
AUGUST 2009



OUR LADY SCHOOL, OCTOBER 2008.
(M.S.)

OUR LADY SCHOOL

287 CUMBERLAND STREET



OUR LADY SCHOOL, JULY 2009. (M.S.)

AN ‘*ETHOS* OF SUSTENANCE’

The lost *ethos* Karsten Harries references in his writing is what it means to dwell, as described by Martin Heidegger in *Building Dwelling Thinking*. Here Heidegger explains that dwelling not only references a presence on the earth but also the manner in which this presencing ought to take place.

The way in which you are and I am, the manner in which we humans are on the earth, is Buan, dwelling. To be a human being means to be on the earth as a mortal. It means to dwell. The old word bauen, which says that man is insofar as he dwells, this word bauen however also means at the same time to cherish and protect, to preserve and care for, specifically to till the soil, to cultivate the vine. – Martin Heidegger

Heidegger’s reference to the old word *bauen* emphasizes the nature of dwelling genuinely, necessarily supported by the presencing mentioned above. Where the old word *bauen* means “to cherish and protect, to preserve and care for, specifically to till the soil, to cultivate the vine,” to dwell genuinely then is the means of providing sustenance for the mind and body through the physical realm of architecture. From Heidegger’s explanation of *bauen*, one can deduce that genuine dwelling is only possible through an ‘*ethos* of sustenance.’

LOWERTOWN WEST OTTAWA



LOWERTOWN WEST OTTAWA, AERIAL VIEW TAKEN FROM MAJOR HILL'S PARK AROUND 1890. (N.C.C. BYTOWN, A GUIDE TO LOWERTOWN OTTAWA)

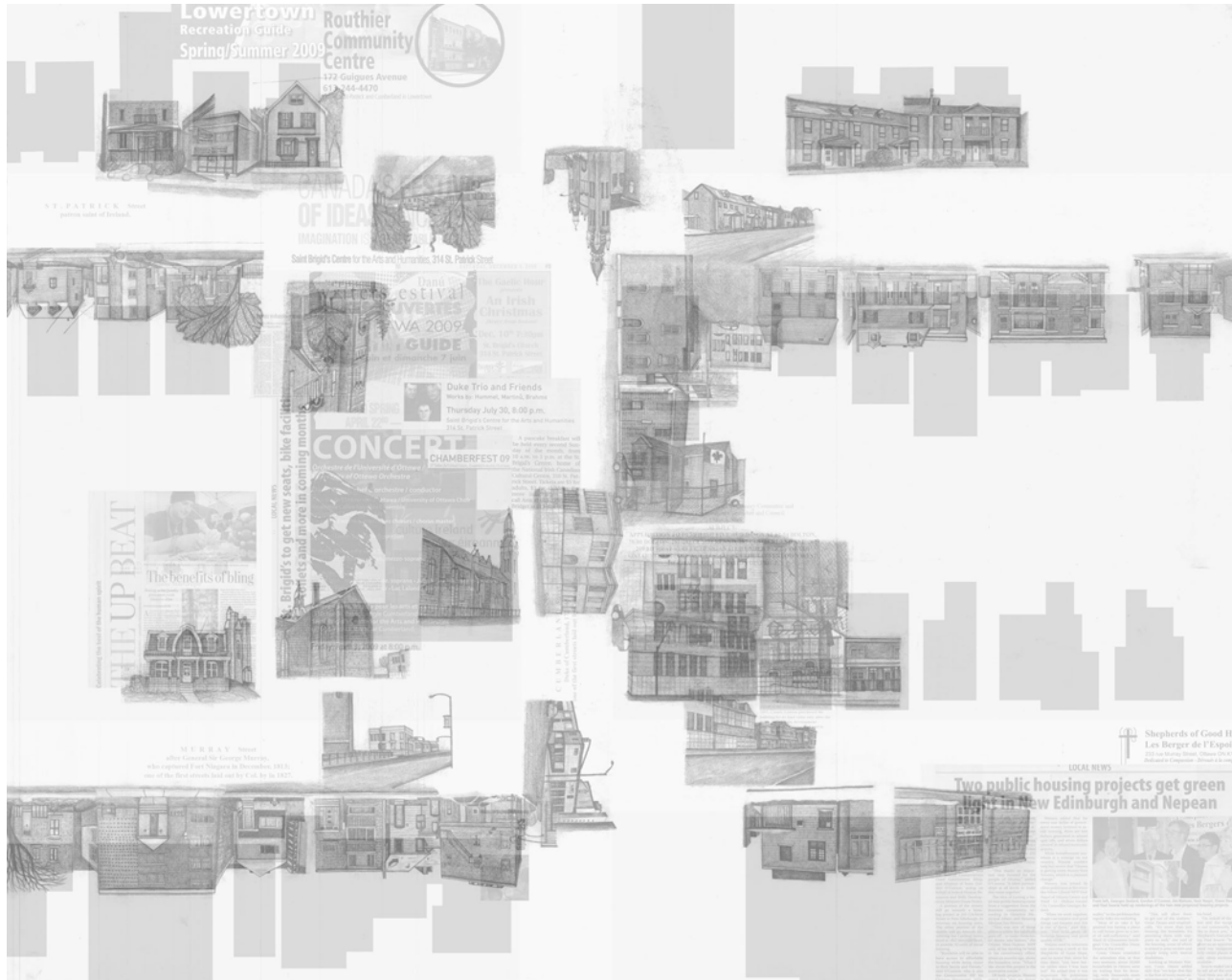
OUR LADY SCHOOL

287 CUMBERLAND STREET

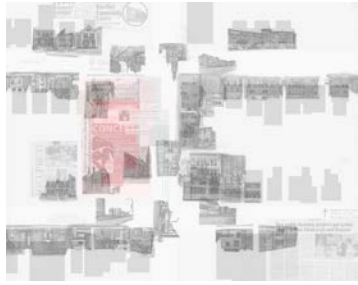


OUR LADY SCHOOL, JULY 2009. (M.S.)

SITE COLLAGE



CURRENT PERCEPTIONS AND USE OF THE JUNCTURE BETWEEN ST. PATRICK, MURRAY AND CUMBERLAND STREETS. (M.S.)



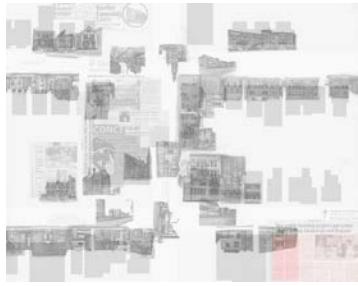
**SAINT BRIGID'S CENTRE
FOR THE ARTS AND HUMANITIES**
FORMER ROMAN CATHOLIC CHURCH (1890)
314 ST. PATRICK STREET, OTTAWA



NORTH FAÇADE, OCTOBER 2008. (M.S.)



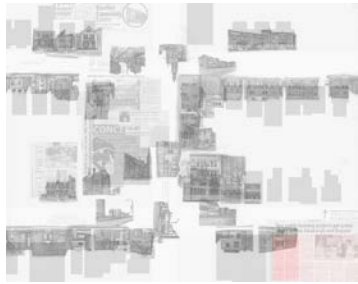
INTERIOR FACING SOUTH TOWARDS MAIN
ALTAR, NOVEMBER 2008. (M.S.)



**SHEPHERDS OF
GOOD HOPE**
FORMER ST. BRIDGET'S SCHOOL
(1924)
233 MURRAY STREET, OTTAWA

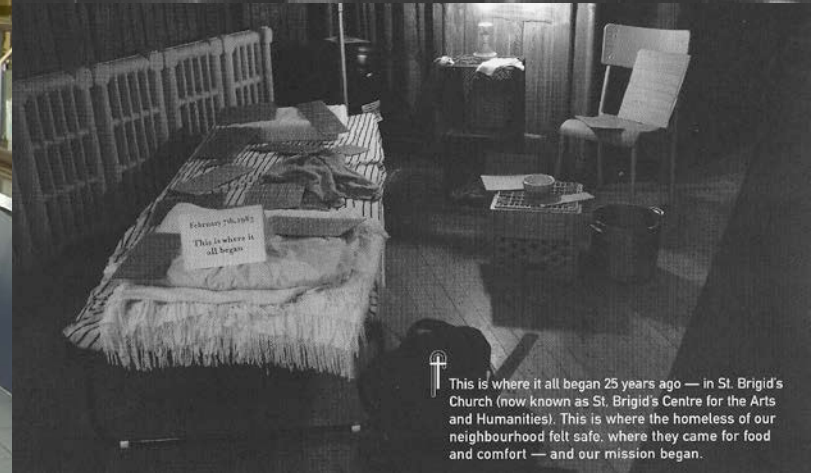
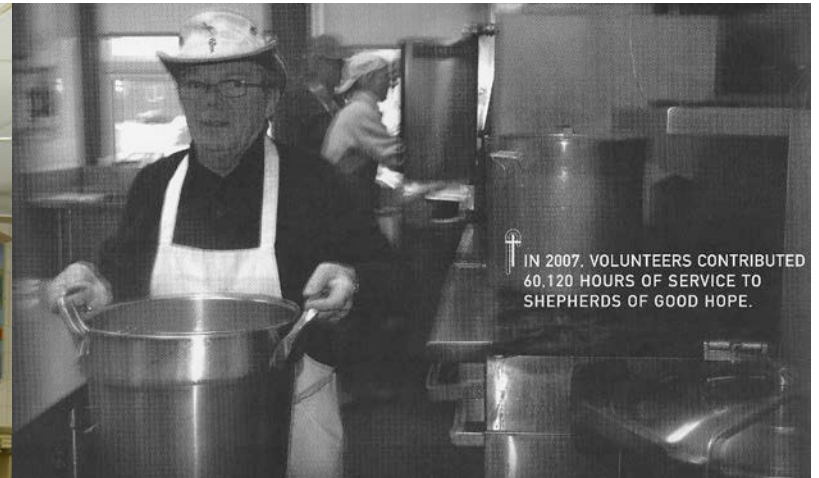


SOUTH FAÇADE, JANUARY 2009. (M.S.)

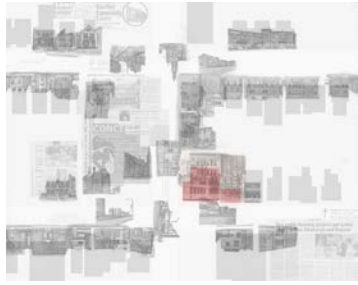


SHEPHERDS OF GOOD HOPE

FORMER ST. BRIDGET'S SCHOOL
(1924)
233 MURRAY STREET, OTTAWA



THE SOUP KITCHEN SERVES NEARLY 400 MEALS PER DAY, JANUARY 2009. (M.S.)



**PROPOSED OUR LADY
COMMUNITY ART CENTRE**
FORMER OUR LADY SCHOOL (1904)
287 CUMBERLAND STREET

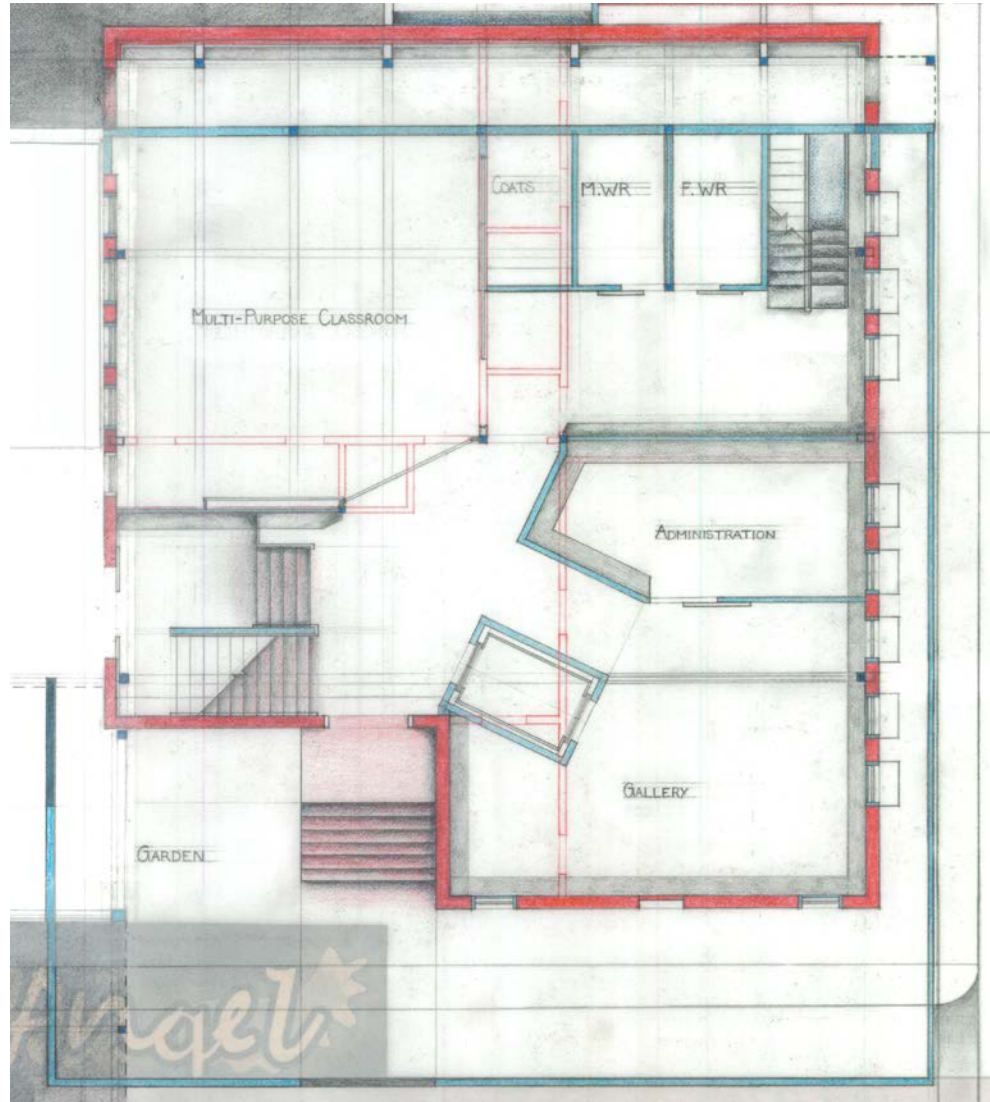


NORTH FAÇADE, JANUARY 2009. (M.S.)

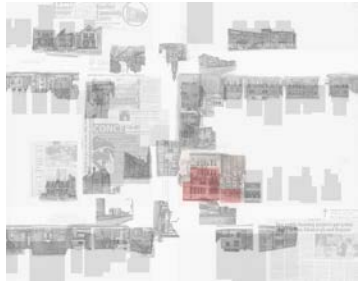


MAIN ENTRANCE WINDOW, OCTOBER 2008.
(M.S.)

GROUND FLOOR PLAN



GROUND FLOOR PLAN ORIGINALLY DRAWN AT 1:100 SCALE.

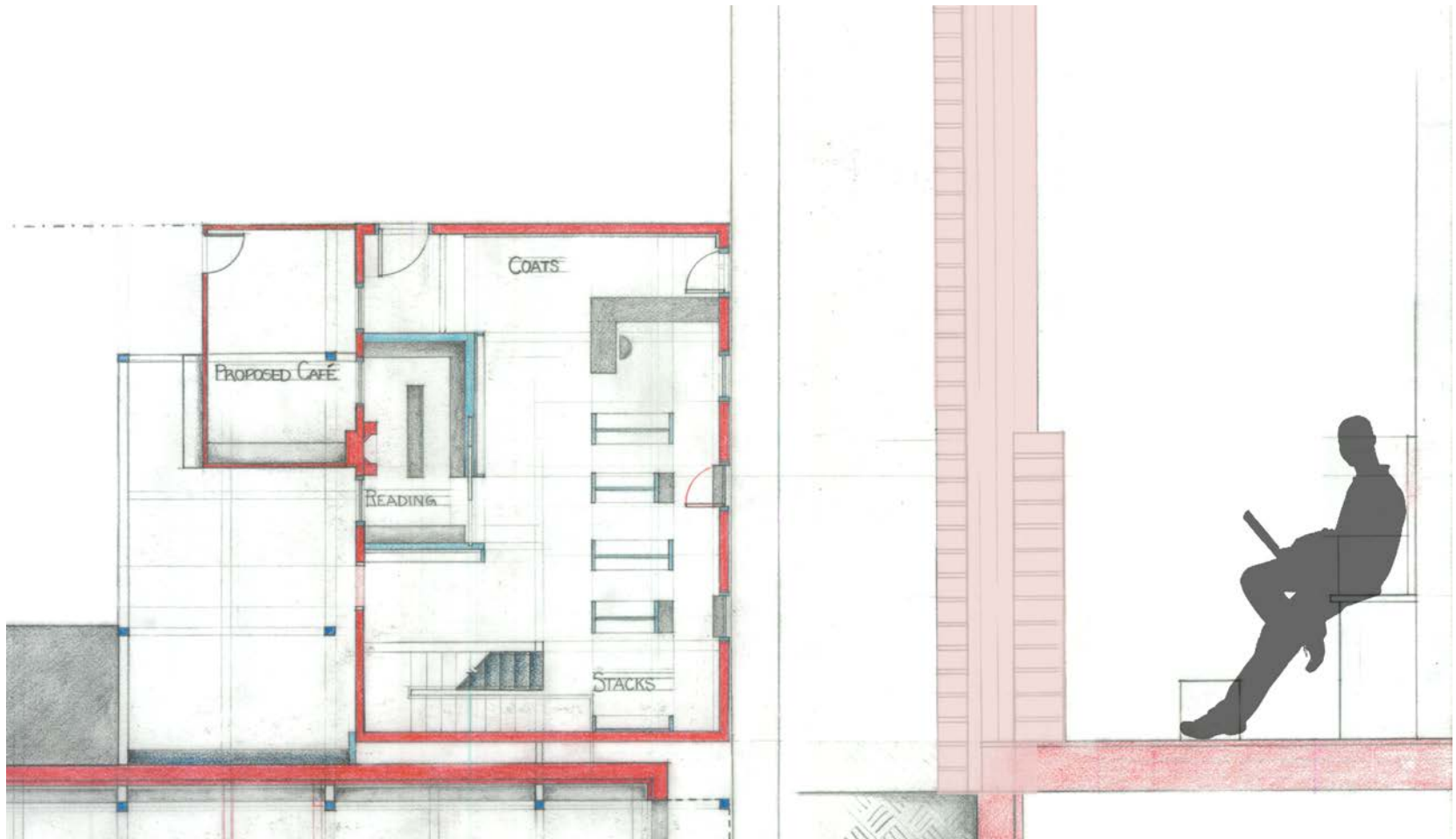


**PROPOSED OUR LADY
COMMUNITY ART CENTRE LIBRARY**
FORMER LOWERTOWN HOUSE (PRE 1872)
207-209 MURRAY STREET

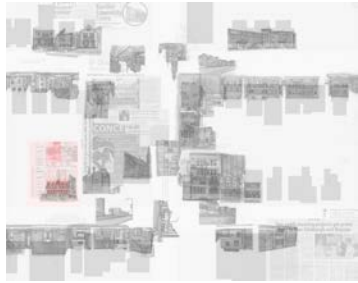


SOUTH FACADE, JANUARY 2009. (M.S.)

GROUND FLOOR PLAN



GROUND FLOOR PLAN ORIGINALLY DRAWN AT 1:100 SCALE.

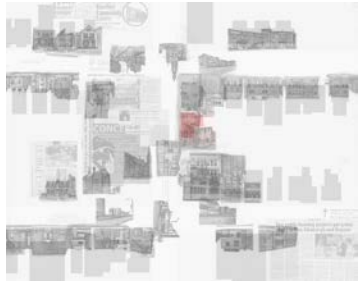


OPERATION COME HOME

FORMER SAINT BRIGID'S
ROMAN CATHOLIC CHURCH RECTORY (1892)
179 MURRAY STREET, OTTAWA



SOUTH FAÇADE, OCTOBER 2008. (M.S.)

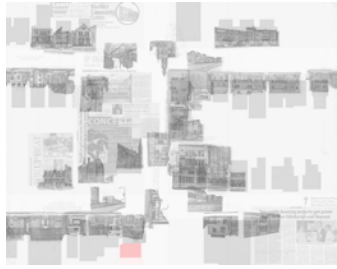


PROPOSED LIVE / WORK SPACES FOR OCH YOUTH

**FORMER CARRIAGE HOUSE (1861-1872)
281-283 CUMBERLAND STREET**



WEST FAÇADE, NOVEMBER 2008. (M.S.)

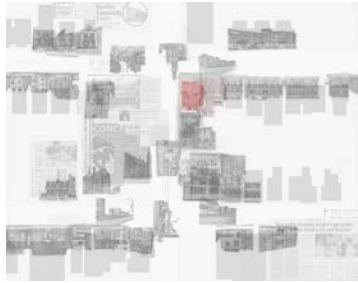


LA PETITE MORT GALLERY

306 CUMBERLAND STREET



EAST FAÇADE, 2008. (TONY FOUHSE)

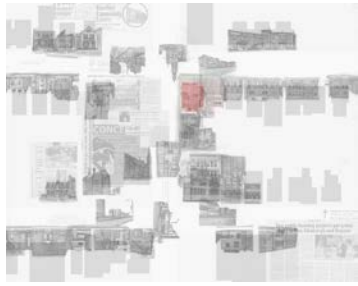


PROPOSED STUDIO SPACE FOR ARTISTS

FORMER LOWERTOWN HOUSE (1880S)
320 ST. PATRICK STREET



WEST FAÇADE, NOVEMBER 2008. (M.S.)

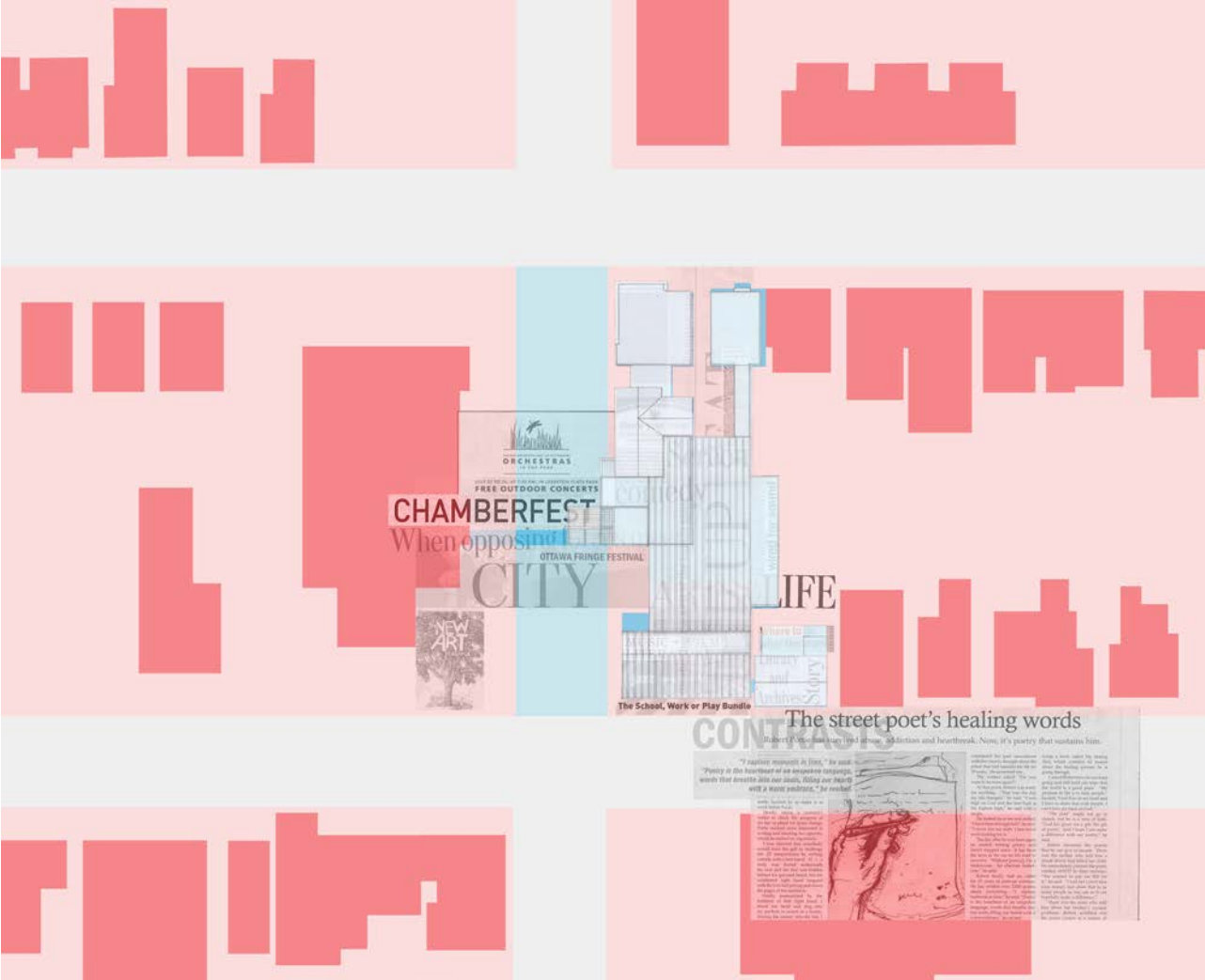


**PROPOSED GALLERY SPACE
FOR ARTISTS AT 320 ST. PATRICK**
FORMER MINEHAN HOUSE (1880S – DEMOLISHED
1966)
324 ST. PATRICK STREET



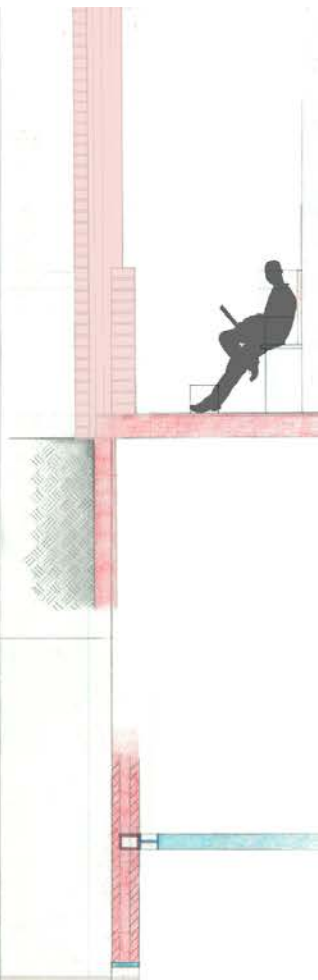
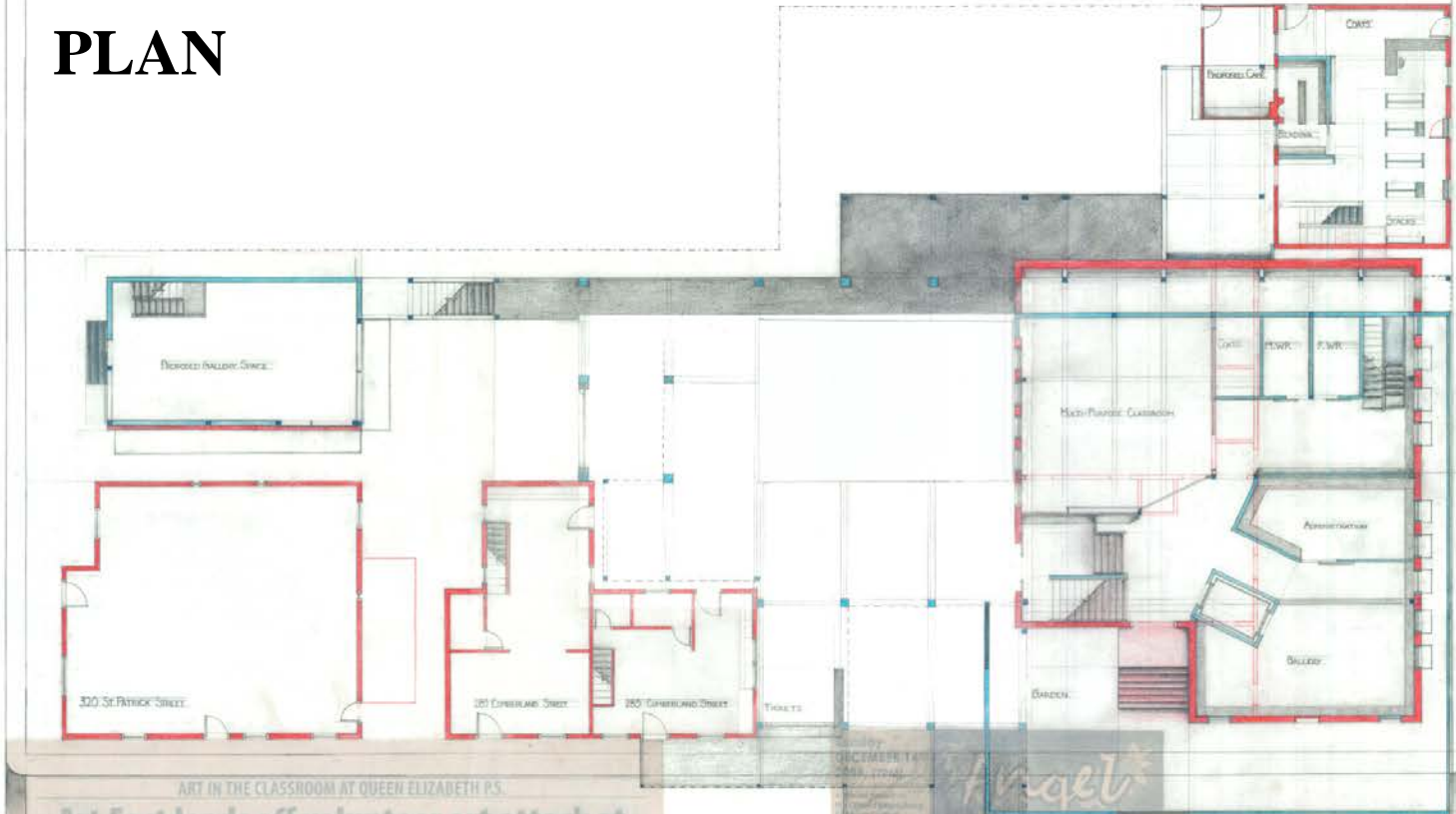
SITE OF FORMER MINEHAN HOUSE, NOVEMBER 2008. (M.S.)

SITE PROPOSAL COLLAGE



POTENTIAL USE FOR THE JUNCTURE BETWEEN ST. PATRICK, MURRAY AND CUMBERLAND STREETS. (M.S.)

GROUND FLOOR PLAN



ART IN THE CLASSROOM AT QUEEN ELIZABETH P.S.
Art East leads off volunteer art attack at Queen Elizabeth Public School

Art East is a volunteer organization that provides art education and resources to schools in the Ottawa area. They recently led an art attack at Queen Elizabeth Public School, where students and teachers created art together. The art attack was a success and the school is looking forward to future projects.

JOIN US
 Art East is always looking for volunteers. If you are interested in helping out, please contact us at 613-237-1111 or visit our website at www.art-east.org.

OTTAWA LITTLE THEATRE
 Ottawa Little Theatre is a non-profit organization that provides drama and theatre education to children and adults. They have a variety of productions and classes available. For more information, visit their website at www.ottawalittletheatre.com.

ART EAST
 Art East is a volunteer organization that provides art education and resources to schools in the Ottawa area. They recently led an art attack at Queen Elizabeth Public School, where students and teachers created art together. The art attack was a success and the school is looking forward to future projects.

OTTAWA LITTLE THEATRE
 Ottawa Little Theatre is a non-profit organization that provides drama and theatre education to children and adults. They have a variety of productions and classes available. For more information, visit their website at www.ottawalittletheatre.com.

ART EAST
 Art East is a volunteer organization that provides art education and resources to schools in the Ottawa area. They recently led an art attack at Queen Elizabeth Public School, where students and teachers created art together. The art attack was a success and the school is looking forward to future projects.

Schools to have faith in

This Ottawa Catholic School Board supports students and families that believe, August 23 in the Holy Spirit of the Holy Spirit.

How to Ottawa?

If you are new to the Ottawa area and need help to find the right school for your child, please contact the Ottawa Catholic School Board at 613-237-1111 or visit our website at www.ottawacatholic.ca.

- Ottawa Catholic School Board provides a variety of services to support students and families.
- Ottawa Catholic School Board provides a variety of services to support students and families.
- Ottawa Catholic School Board provides a variety of services to support students and families.

Kindergarten Eligibility

Children must be 5 years old by September 1st to be eligible for kindergarten.

Family Welcome Centre

The Family Welcome Centre is a place where families can get help and support. It is located at 1000 Somerset Street West, Ottawa, Ontario. For more information, visit our website at www.ottawacatholic.ca.

Transportation

Transportation is provided for students who live in the Ottawa area. For more information, visit our website at www.ottawacatholic.ca.

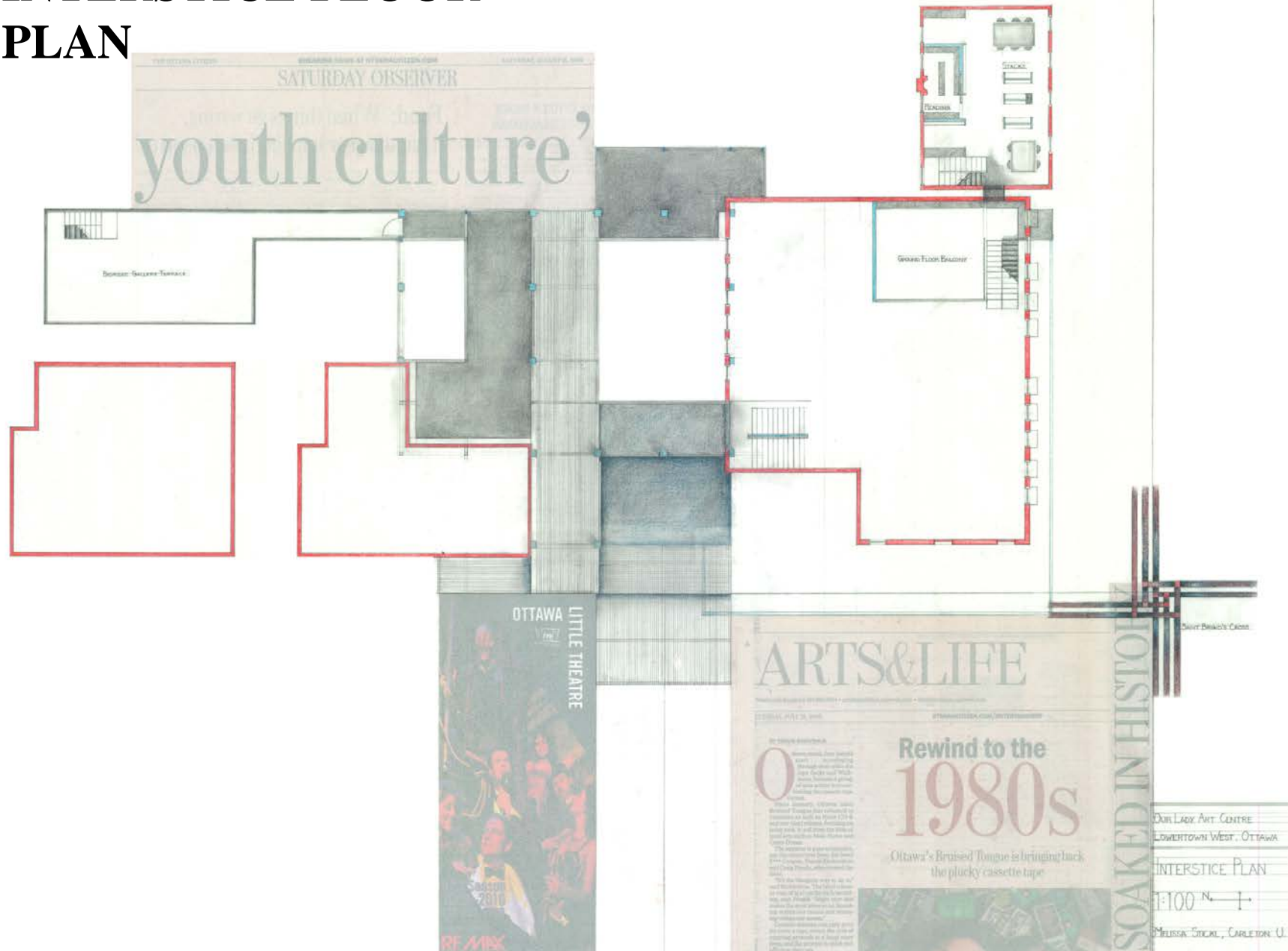
OUR LADY ART CENTRE
 LOWERTOWN WEST, OTTAWA

GROUND FLOOR PLAN

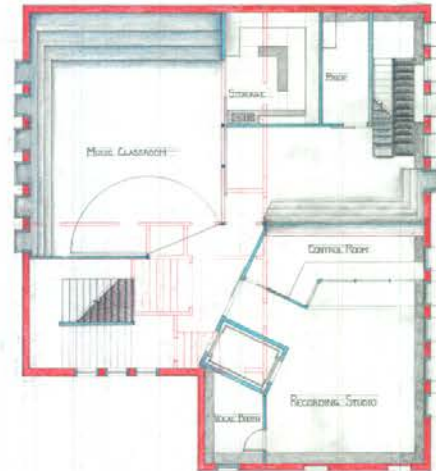
1100 N. 1

MELISSA STICK, CARLETON U.

INTERSTICE FLOOR PLAN



SECOND FLOOR PLAN



OUR LADY ART CENTRE
LOWERTOWN WEST, OTTAWA

SECOND FLOOR PLAN

1:100 N

MELISSA STIGAL - CARLETON U

WEST ELEVATION



SECTION LOOKING EAST



SITE MODEL



SITE MODEL FROM ABOVE, FEATURING THE WEST ELEVATION, ORIGINALLY CONSTRUCTED AT 1:100 SCALE.

THESIS DEFENSE – MONDAY, AUGUST 24, 2009



DRAWINGS ARE HUNG AT SAINT BRIGID'S ON DOORS FROM A TOBACCO STICK KILN ON MY PARENTS FARM IN SOUTHWESTERN ONTARIO.

THESIS DEFENSE – MONDAY, AUGUST 24, 2009



DEFENSE PANEL: PROFESSOR FEDERICA GOFFI, DR. CLAUDINE DEOM, PROFESSOR SHERYL BOYLE, DR. STEPHEN FAI.