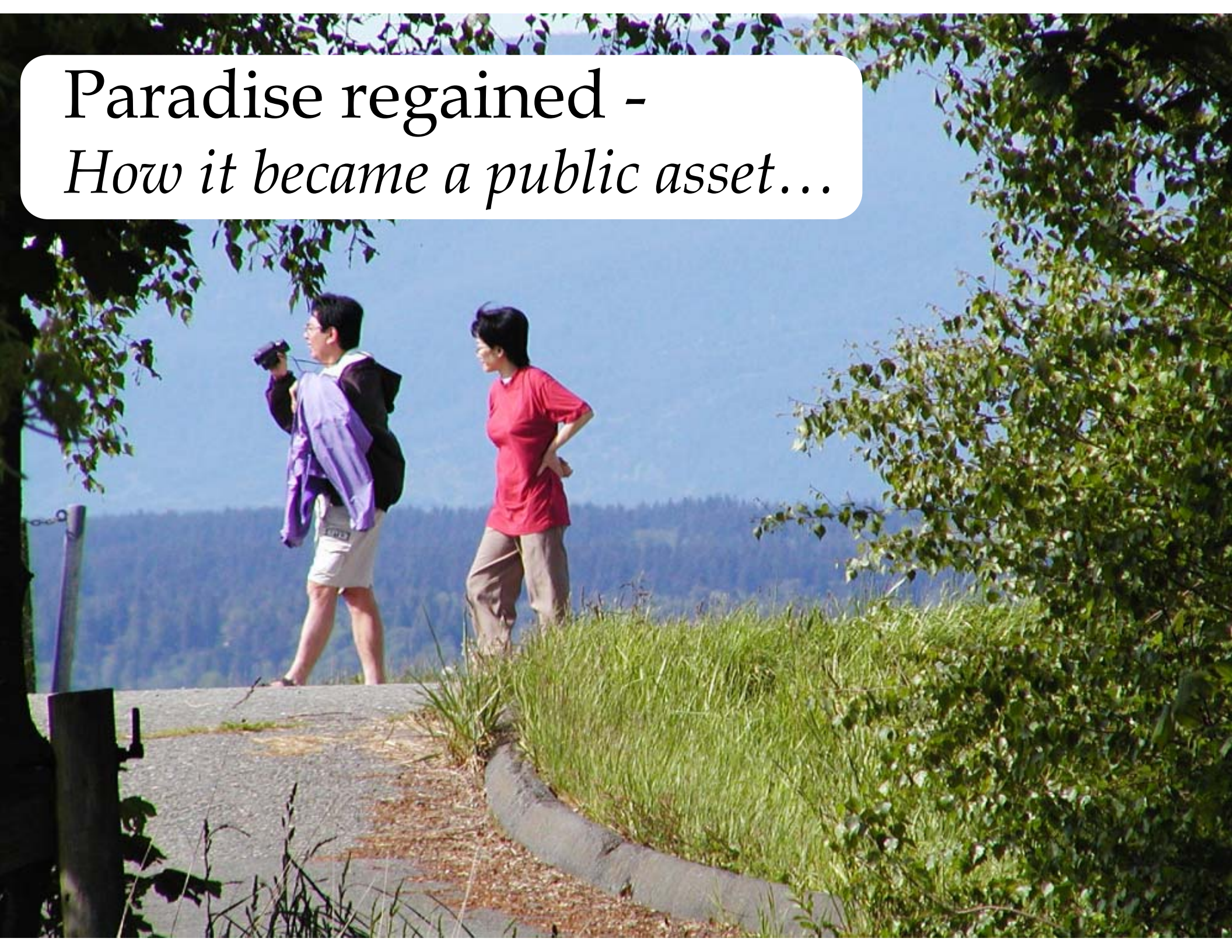




Terra Nova Rural Park




Paradise regained - *How it became a public asset...*



TERRA NOVA

"The loss of the last major block of this habitat type in Richmond will be significant and noticeable... an impending loss of this magnitude seems particularly tragic,"
T.E. Burgess
B.C. Environment Ministry



"Terra Nova is at a critical point in the Pacific flyway... hundreds of thousands of waterfowl and shore-birds use the marshes and mudflats adjacent to Terra Nova,"
Robert Butler
Canadian Wildlife Service

Terra Nova is a precedent setting environmental case that will be decided by the Supreme Court of Canada. In order to win this case, we desperately need your support.

The fight to save our environment must begin on our own doorstep. If you want to help, please send a donation, today, to:

Save Richmond Farmland Society
6580 Mayflower Drive
Richmond, B.C. V7C 3X6
Telephone 271-6556

If you require a tax receipt, please send your cheque to the above address and make it payable to: The Canadian Environmental Defence Fund (SRFS)

SUPPORTING ORGANIZATIONS

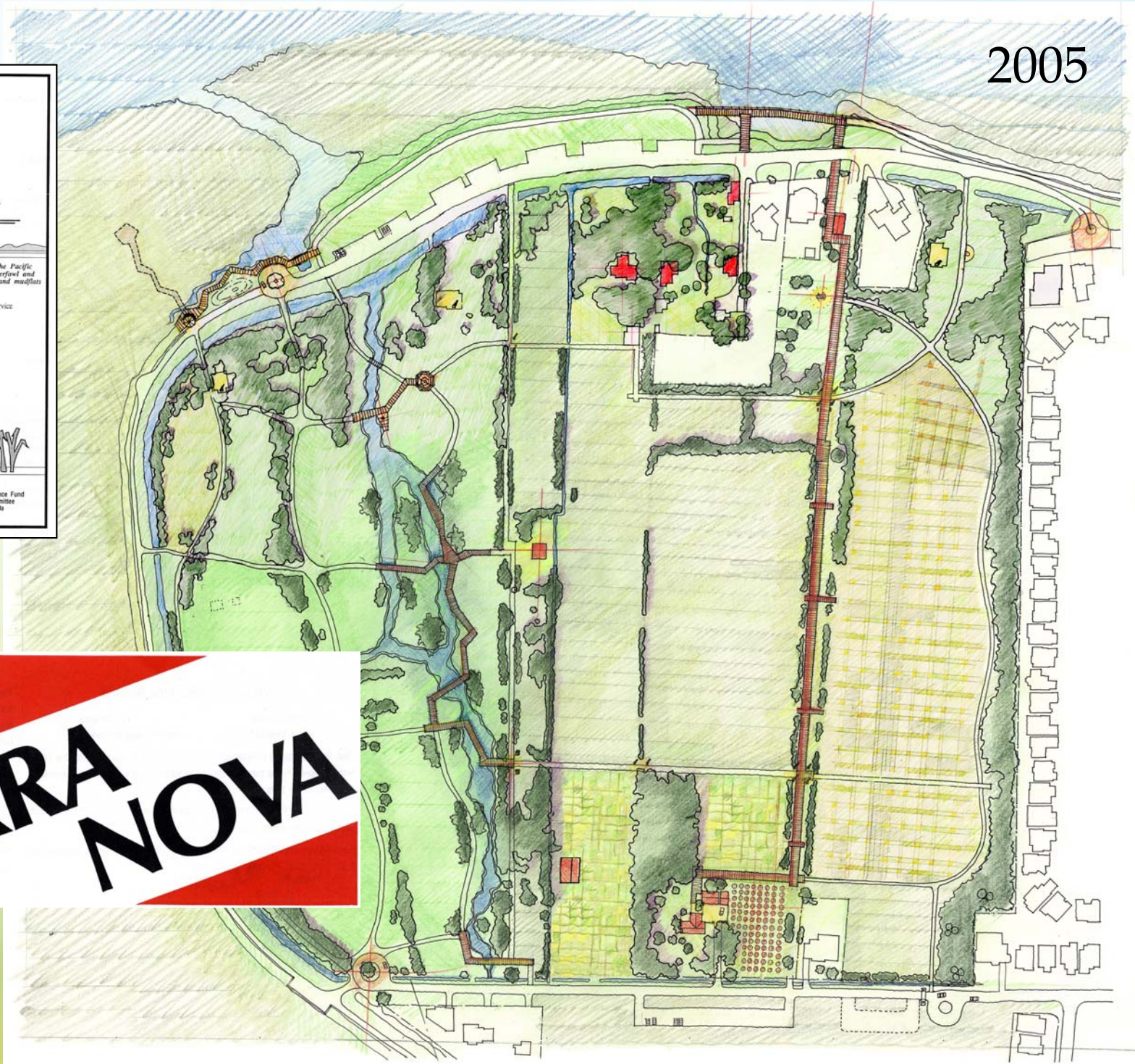
West Coast Environmental Dispute Resolution Fund	Canadian Environmental Defence Fund
Sechelt Marsh Protective Society	Fraser Wetlands Habitat Committee
Vancouver Natural History Society	Sierra Club of Western Canada

The Save Richmond Farmland Society is a non-profit society run solely by volunteers

1988

**SAVE
TERRA NOVA**

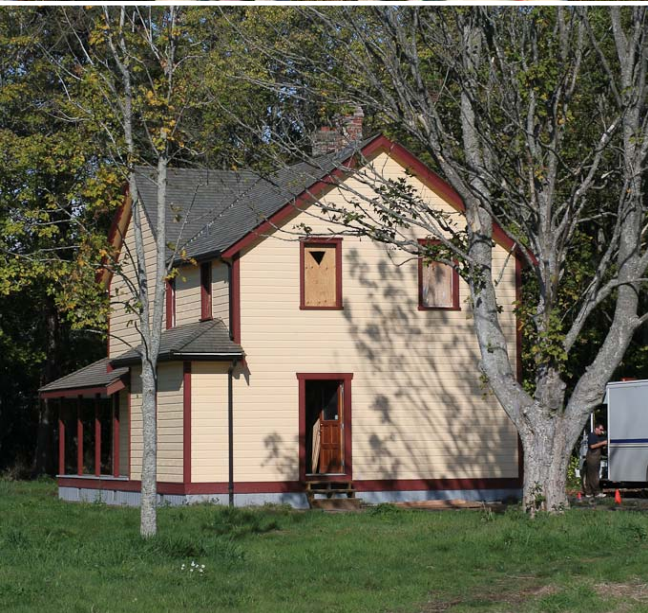
2005



People, Places and Stories

Highlighting the seen and exposing the unseen...





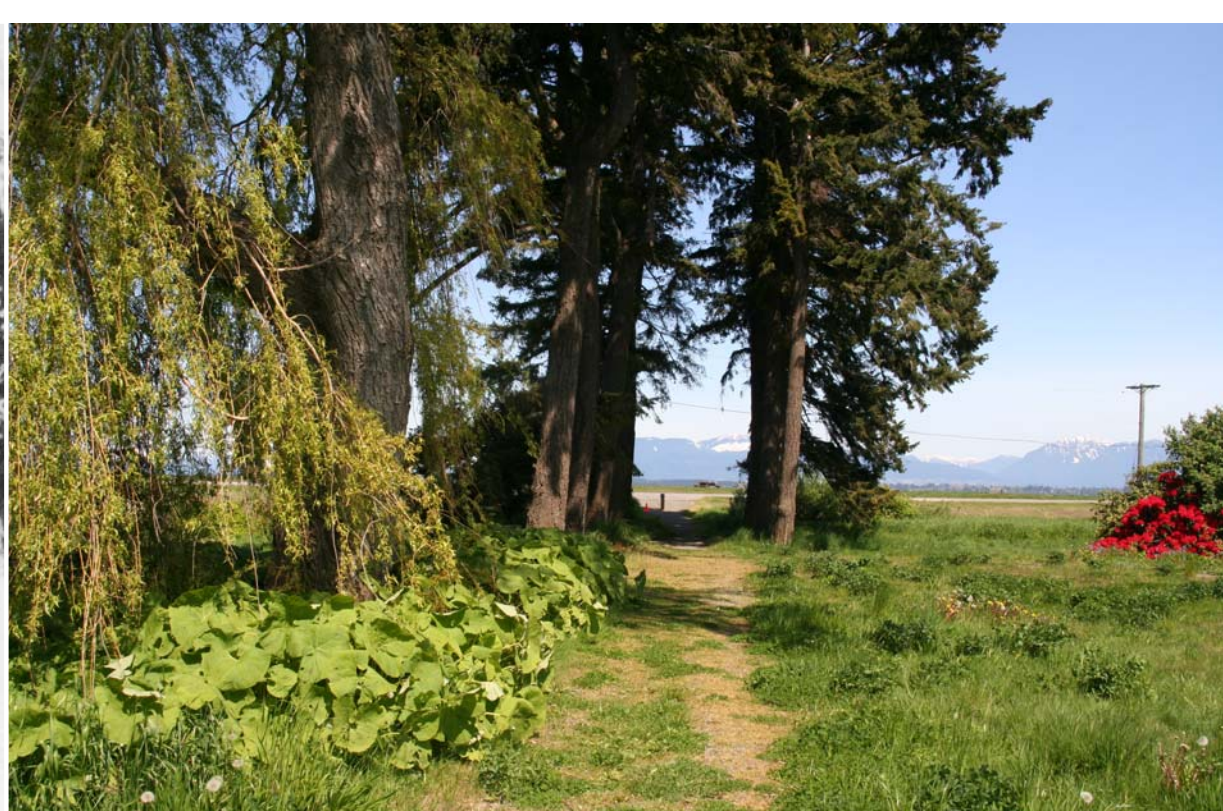
1942 FAMILY PIX (AND FRIEND)
 * FRONT LAWN (HOUSE IN BACKGROUND)
 * LEFT SIDE = MULBERRY HEDGE (EAST)
 * EAST OF HEDGE = FRUIT TREES (PART OF ORCHARD)





Daylighted Slough





Engagement

Connecting and Mobilizing People





Terra Nova Schoolyard Society





Fruit Tree Sharing Project



Sustainability

The business of heritage conservation



Terra Nova Rural Park

The Peaceable Kingdom



Artwork by: Edward Hicks



