



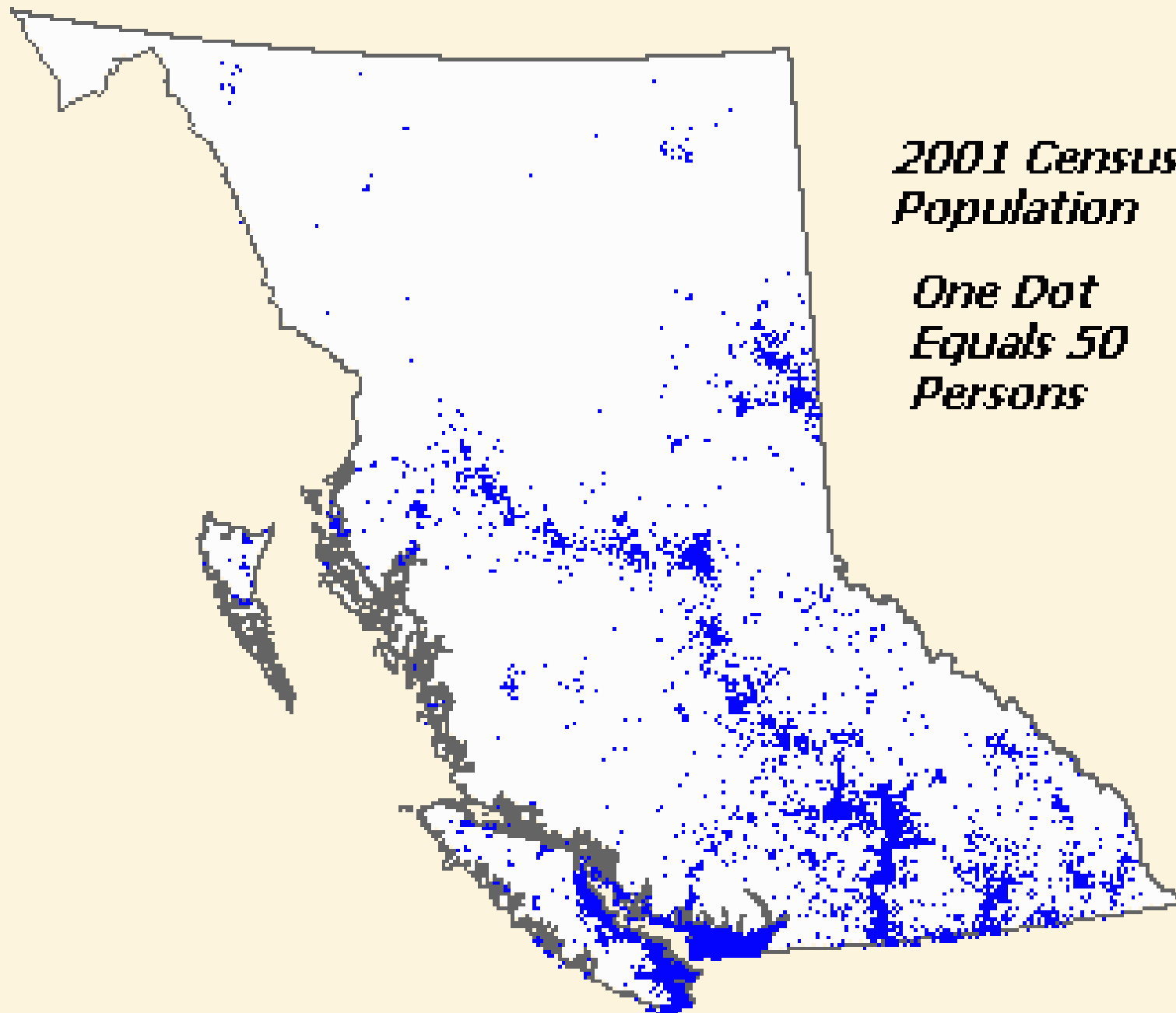
TLC

---

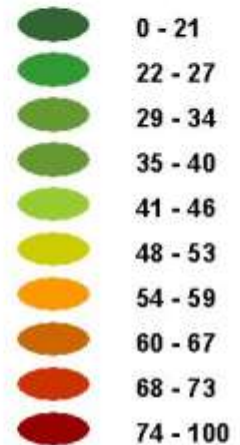
**The Land Conservancy  
of British Columbia**

*2001 Census  
Population*

*One Dot  
Equals 50  
Persons*



The average of all  
importance proxies.  
Irreplaceability contributes 50%;  
all other proxies combine to  
contribute remaining 50%.



### **IMPORTANCE INDEX**

Importance Index - Equal Area





### DENSITY

0 to .5
.5 to 5
5 to 20
20 to 100
100 to 2000
2000 plus



From: "Growing Together"  
MAL, Fall 2007, Vol 8, No 1

- According to 2006 census data, 81% of British Columbians live in two small triangles accounting for only 3% of B.C.'s land base.
- B.C.'s two most densely populated regions also boast the province's best farmland, growing conditions and biodiversity.
- In fact, those two tiny triangles generate 80% of the province's annual farm receipts.
- Between 2001 and 2006, 89% of B.C.'s population increase occurred in these regions, as did 67% of the total increase in provincial farm receipts.

































# Conservation Partners



Farmers growing food  
and protecting natural habitats











# Beaver Meadow Farm

## Natural Pastures Cheeses

conservation partners program



This third generation farm has been operated by the Smith family for 80 years. Today Edgar, Philip and Doug Smith holistically manage their certified heritage dairy farm. Their goal is to create a diverse landscape of forest, grassland and riparian areas which maintain the native integrity of the Upper Little River Basin. The restored stream habitat supports over 400,000 fry - one of the most productive fish habitats on the east coast of Vancouver Island. Their operations include grass-fed cows (no pesticides, GMO's or feed additives), eco-forestry products, cranberries, and wasabi. Fresh milk supplies their production of Natural Pastures fine hand-made Artisan cheese

### Products:

Natural Pastures Cheeses, cranberries, Natural Spring Wasabi

[www.naturalpasturescheese.com](http://www.naturalpasturescheese.com)

Comox BC



# On-farm engagement with Farm Holidays











Welcome to Madison

Apples	\$2.50
Bananas	\$2.50
Carrots	\$2.50
Corn	\$2.50
Cucumbers	\$2.50
Eggplant	\$2.50
Garlic	\$2.50
Green Beans	\$2.50
Hot Peppers	\$2.50
Onions	\$2.50
Potatoes	\$2.50
Spinach	\$2.50
Tomatoes	\$2.50
Zucchini	\$2.50



# FAIRBURN FARMSTAY AND GUESTHOUSE



**Welcome to Fairburn Farmstay and Guesthouse**  
**Farm Vacations on a Working Water Buffalo Dairy Farm!**

Nestled in the beautiful Cowichan Valley, Vancouver Island, on a working water buffalo dairy farm, this charming 19th century farmhouse sits on 130 acres of forest and farmland, offering comfort, history, and adventure. This tranquil setting is a naturalist paradise: walking trails alongside the meandering creek, and wildlife and farm life at your fingertips.









Welcome to Madison

Apples	\$2.50
Bananas	\$2.50
Broccoli	\$2.50
Carrots	\$2.50
Corn	\$2.50
Cucumbers	\$2.50
Eggplant	\$2.50
Garlic	\$2.50
Green Beans	\$2.50
Kale	\$2.50
Leeks	\$2.50
Onions	\$2.50
Potatoes	\$2.50
Spinach	\$2.50
Sweet Corn	\$2.50
Tomatoes	\$2.50
Zucchini	\$2.50







# Community Farms in BC

**Building Local Food Systems for Sustainable Communities**

Community Farms Survey Report

A collaborative effort between

FarmFolk/CityFolk, The Land Conservancy of BC, and Simon Fraser University

## Community Farms Program



### **Community Farms in BC Building Local Food Systems for Sustainable Communities Survey Report.**

Hannah Wittman. March 2009. 15pp.

More than 20 BC farms have been identified by TLC/FFCF as leaders in sustainable organic agriculture, cooperative farm management, and commitment to farmland protection. This study seeks to identify key operational strategies practiced by farms that operate within a community farms framework, and to identify challenges for the implementation of new community farms.

# Community Farms Program Feasibility Study

Community Farms Program



## **Community Farms Program Feasibility Study.**

Wanda Gorsuch. April 2008. 76pp.

One means of protecting food production in BC is making farmland accessible to new farmers and keeping land in production. This feasibility study provides a general overview of some of the opportunities and barriers faced by community farms in BC in contributing to these ends: securing land, enabling affordable access and long-term leases for food production.



# Whole Farm Plan Guide

Community Farms Program



## Whole Farm Plan Guide.

Barbara Joughin. December 2009. 63pp.

A Whole Farm Plan includes an inventory and assessment of land-related resources, legal information, and farm activities. This information is used to create a vision and goals for the farm which in turn provide a framework for developing farm plans and agreements (e.g. business plans, land-use and tenure agreements, succession plans). This publication provides procedures and information, templates and resources to support both individual and cooperative farmers to complete a Whole Farm Plan.



## Business Planning

for Small-Scale Community Farming Enterprises

Community Farms Program



## Business Planning for Small Scale Community Farming Enterprises

Robin Tunnicliffe. April 2009. 35 pp

# A Guide to Farmland Access Agreements

Leases, Profits à Prendre,  
Licences & Memoranda of Understanding

Community Farms Program



## **A Guide to Farmland Access Agreements Leases, Profit à Prendre, Licenses and Memoranda of Understanding.**

Wanda Gorsuch. April 2009. 65pp.

A publication designed to help people who are interested in creating access or shared uses of farmland. This guide provides information to:

- understand basic legal background of agreements
- help select the agreement that suits your situation
- know when and where to seek information and permissions.
- draft a basic agreement (templates) that can be legally reviewed.



# BC's Farming and Food Future:

## Local Government Toolkit for Sustainable Food Production

Community Farms Program



### **A Review of Farmland Trusts Communities Supporting Farmland, Farming, and Farmers.**

Ramona Scott, Wanda Gorsuch. April 2010. 113pp.

This report discusses the role that farmland trusts can play in addressing farmland preservation, farm viability, and local food sovereignty. A summary of learning from study of 31 farmland trusts to assist in the development of farmland trust abilities in B.C.

# A Review of Farmland Trusts Communities Supporting Farmland, Farming, and Farmers

Community Farms Program



Ramona Scott, Wanda Gorsuch. April 2010. 113pp.

This report discusses the role that farmland trusts can play in addressing farmland preservation, farm viability, and local food sovereignty. A summary of learning from study of 31 farmland trusts to assist in the development of farmland trust abilities in B.C.











