

New Strategies for Public Engagement

Connecting and Mobilizing People

Martin Purslow
CEO National Trust of Australia (Victoria)

Old Melbourne Gaol
& the Business of Justice



NATIONAL TRUST



OLD MELBOURNE GAOL
Crime & Justice Experience





NATIONAL TRUST

'Our heritage... yesterday,
today and tomorrow'



Strategic Plan
2009 to 2013



OLDMELBOURNEGAOL
Crime & Justice Experience







NATIONAL TRUST



OLD MELBOURNE GAOL
Crime & Justice Experience



BUILDING THE MELBOURNE GAOL

The Melbourne Gaol complex was built in 1846-47, designed by James Hume, and was the first of its kind in Australia. It was built on the site of the old Melbourne Gaol, which was built in 1840-41.



The Melbourne Gaol complex was built in 1846-47, designed by James Hume, and was the first of its kind in Australia. It was built on the site of the old Melbourne Gaol, which was built in 1840-41.

The Melbourne Gaol complex was built in 1846-47, designed by James Hume, and was the first of its kind in Australia. It was built on the site of the old Melbourne Gaol, which was built in 1840-41.

The Melbourne Gaol complex was built in 1846-47, designed by James Hume, and was the first of its kind in Australia. It was built on the site of the old Melbourne Gaol, which was built in 1840-41.

OLD MELBOURNE GAOL (CELL BLOCK)

Walk the road to the gallows in Victoria's oldest prison where 136 people, including infamous bushranger Ned Kelly, were hanged. Experience the harsh realities of a 19th century prison. Learn about the lives and crimes of the men, women and children who were kept here.

Tour Times

Self guided, anytime

Duration

Approximately 1 hour

OLD MAGISTRATE'S COURT COMPLEX

1*

OLD CITY COURT

POLICE WATCH HOUSE

ENTRY

2

FORMER RUSSELL ST POLICE HQ KNOWN AS 'D24'

3*

WATCH HOUSE TOUR STARTS HERE

TOILETS

ORIGINAL GAOL ENTRY GATE (ON FRANKLIN ST)

ORIGINAL GAOL CHAPEL

OLD MELBOURNE GAOL - CELLBLOCK

4*

TICKETS, SHOP & ENTRANCE

POLICE WATCH HOUSE

Join one of our Sergeants and experience what its like to be arrested, charged and locked-up inside Melbourne's City Watch House. Cross the thin blue line and explore the place where Australia's most infamous criminals started their careers.

Tour Times

See board outside Watch House or Gaol for times

Duration

Approximately 30 mins

* Parental guidance required (15 years and under)

Challenging environment, coarse language and adult themes



NATIONAL TRUST



OLDMELBOURNEGAOL
Crime & Justice Experience



NATIONAL TRUST



OLD MELBOURNE GAOL
Crime & Justice Experience



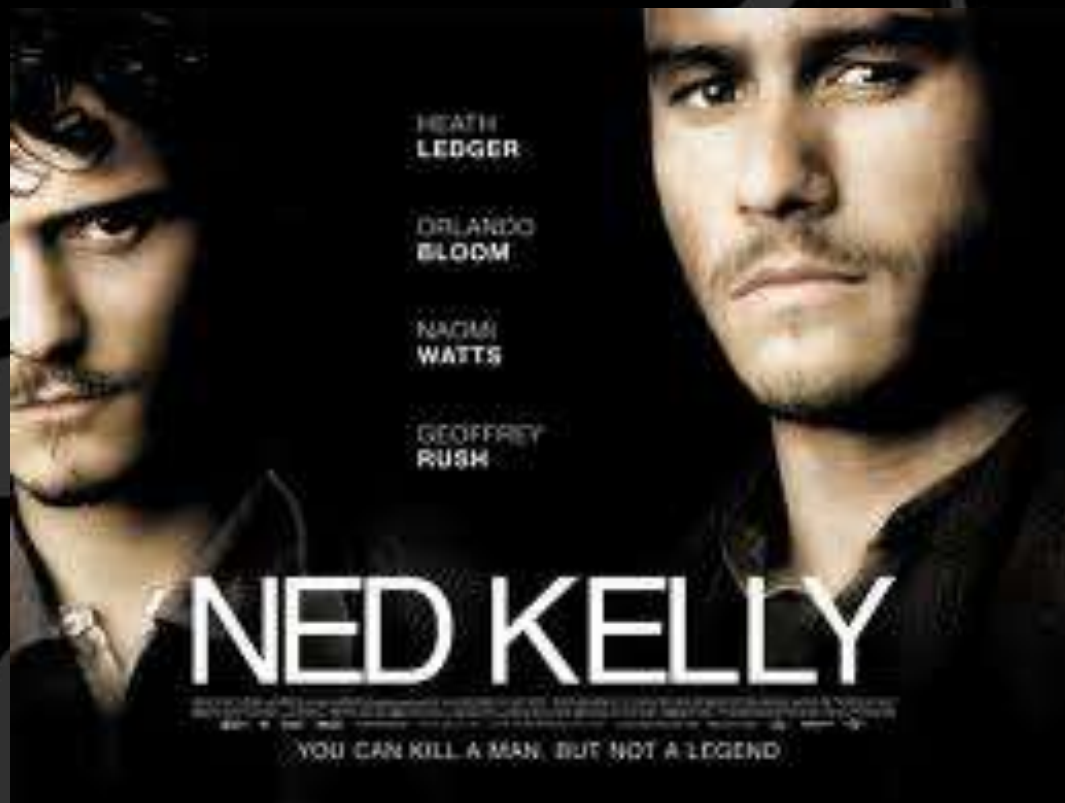
NATIONAL TRUST



OLD MELBOURNE GAOL
Crime & Justice Experience

WOODFALL Presents MICK JAGGER in A TONY RICHARDSON Film

NED KELLY



NATIONAL TRUST



OLD MELBOURNE GAOL
Crime & Justice Experience



THE KELLY QUEST

A PROGRAM FOR YEARS 7-10

EDUCATION RESOURCE



THE KELLY QUEST

A PROGRAM FOR YEARS 7-10

The Kelly Quest is a full-day program that enables secondary students to discover the story of Ned Kelly and his gang by visiting three Melbourne institutions: the Victoria Police Museum, the State Library of Victoria and the Old Melbourne Gaol - Crime and Justice Experience.

At the three institutions, students will view, up close, important primary-source material related to the Kelly story. During the program, students will be challenged with different perspectives on Ned Kelly, his family, the gang, society and the law.

The Kelly Quest Program Dates for 2019

Term 1	15 March - 20 March
Term 2	31 May - 11 June
Term 3	30 August - 10 September
Term 4	22 November - 3 December

Cost: \$20 per student

For more information go to:

www.oldmelbournegaol.com.au/education_and_groups

For bookings: phone (03) 8653 7228 or email bookings@oldmelbournegaol.com.au



OLDMELBOURNEGAOL
Crime & Justice Experience



State Library
of Victoria



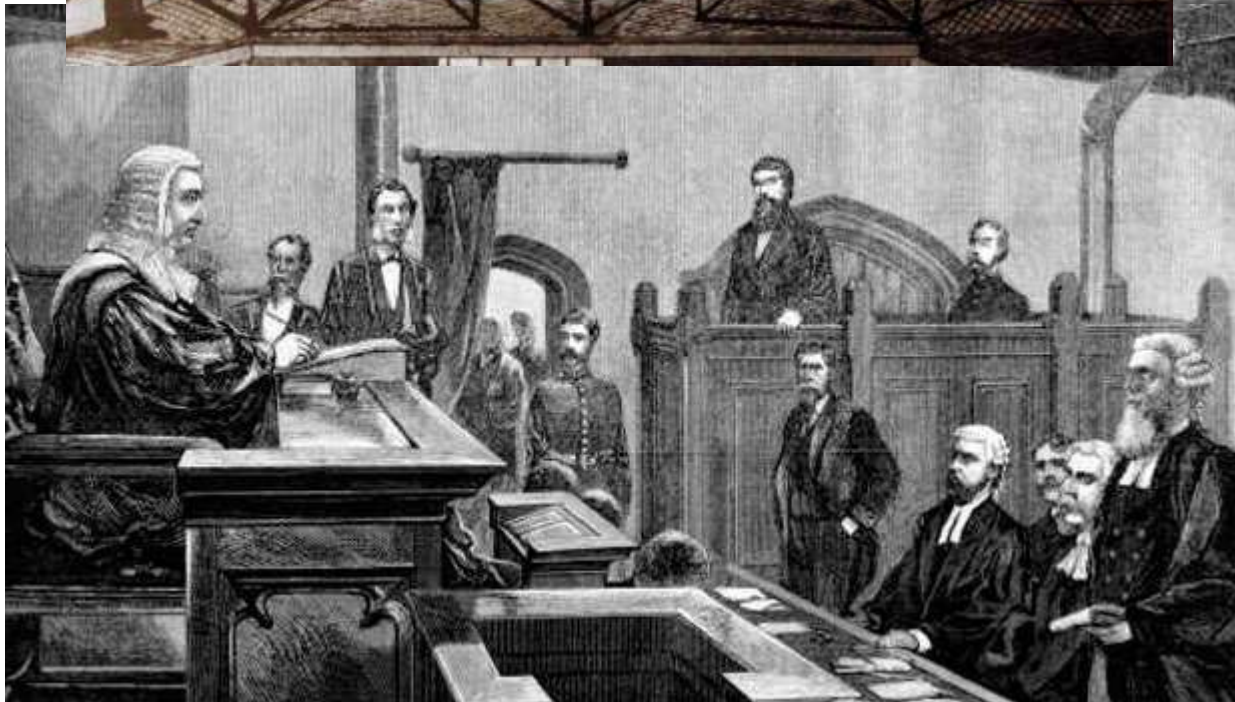




NATIONAL TRUST



OLD MELBOURNE GAOL
Crime & Justice Experience





NATIONAL TRUST



OLD MELBOURNE GAOL
Crime & Justice Experience



NATIONAL TRUST



OLD MELBOURNE GAOL
Crime & Justice Experience













NATIONAL TRUST



OLD MELBOURNE GAOL
Crime & Justice Experience



“You’ll hang
by the neck
until you
be **dead!**”

If justice is to be done, the decisions of
courts must reflect the values of the day.

*Found guilty of murder, Elizabeth Scott became
the first woman executed in Victoria. If she were
tried today, would you still find her guilty?*



“I’ve **killed**
my best
mate!”

Effective laws reflect a society's
standards and provide for appropriate
sanctions.

*Spurred on by his peers, 18 year old Kim
floored the accelerator and seconds later had
killed his two friends. What punishment will
you give him?*







NATIONAL TRUST



OLD MELBOURNE GAOL
Crime & Justice Experience



NATIONAL TRUST



OLD MELBOURNE GAOL
Crime & Justice Experience



Old Magistrates' Court – Courtroom Dramas

Yr 5 – 12
VELS levels 4 - 6 – all strands
VCE Legal Studies Units 1, 2 & 4
Session Duration: 1 Hour

CRD 1. You'll hang by the neck until you be dead (VELS 4-6)

CRD 2. The Crown v Edward Kelly (VELS 4-6)

CRD 3. I've killed my best mate (VELS 6 – VCE)

CRD 4. Face Your Elders (Koori Court)
(VELS 6 – VCE)

With the backdrop of the austere and old world atmosphere of a Melbourne court that heard thousands of cases in its colourful history, courtroom dramas are scripted trials based on actual cases where the students play all the roles to bring the trial and their significance back to life.

Two history and two contemporary based trials are conducted that move the learner from an observer into a participant.

Price
From \$9 depending on package.

Group size
Minimum group size 12.
Maximum group size 30.

How to get there
Main Entrance at Old Melbourne Gaol, Russell Street between Victoria & Latrobe Streets.

Booking/Contact
Phone: 8663 7223
e-mail: bookings@oldmelbournegaol.com.au
web: www.oldmelbournegaol.com.au



Former City Watch House – The Watch House Experience

Yr 9 – 12

VELS levels 5 & 6 – all strands

VCE Legal Studies Unit 1, Criminal Law & Justice

Session Duration: 30 - 45 minutes

The City Watch House was built in 1909 and is presented as it was when operating in 1994. The watch house experience opens eyes to contemporary and historical issues of law and order.

Students explore notions of justice and human rights, moral and ethical dilemmas and how they play out at the pointy end – where the law meets the community.

This immersive approach makes for compelling learning.

Price
From \$5 depending on package.

Group size
Minimum group size 12.
Maximum group size 30.

How to get there
Main Entrance at Old Melbourne Gaol, Russell Street between Victoria & Latrobe Streets.

Booking/Contact
Phone: 8663 7223
e-mail: bookings@oldmelbournegaol.com.au
web: www.oldmelbournegaol.com.au



Winner of Australia's Premiere Heritage Tourist Attraction!



Winner of Australia's Premiere Heritage Tourist Attraction!











NATIONAL TRUST



OLD MELBOURNE GAOL
Crime & Justice Experience





NATIONAL TRUST



OLD MELBOURNE GAOL
Crime & Justice Experience





NATIONAL TRUST



OLDMELBOURNEGAOL
Crime & Justice Experience



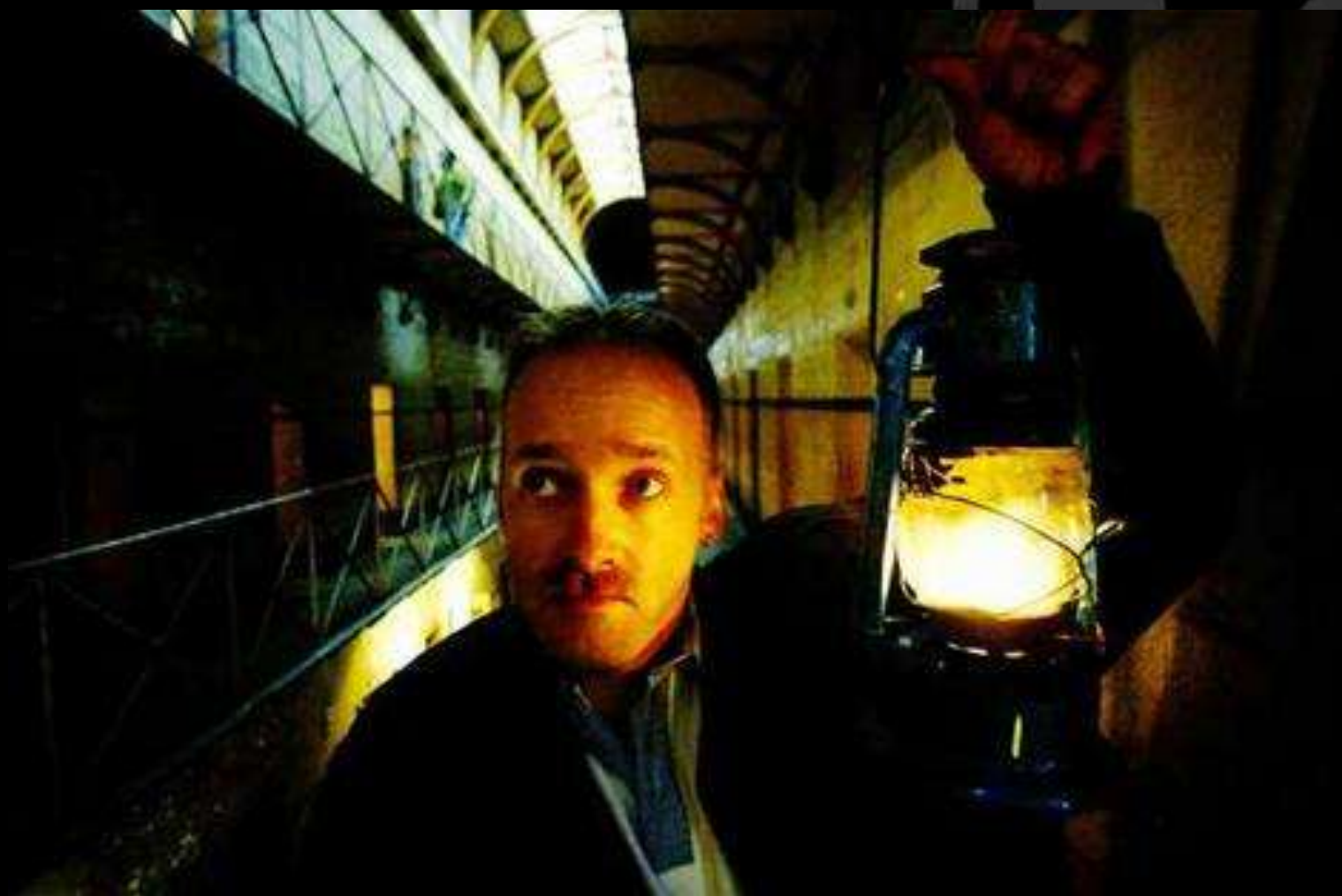




NATIONAL TRUST



OLD MELBOURNE GAOL
Crime & Justice Experience



NATIONAL TRUST



OLD MELBOURNE GAOL
Crime & Justice Experience







No.5 Ration for children of female prisoners
under 2 years of age: -

Milk	1 quart
Bread	4 oz
Sugar (ration)	1oz
Soap	1/2oz

No.6 Ration for children of female prisoners
over 2 and under eight years of age: -

Bread	8oz
Meat	4oz
Milk	1pint
Sugar (ration)	1oz
Soap	1/2oz



NATIONAL TRUST



OLDMELBOURNEGAOL
Crime & Justice Experience

Holiday Program

- Gaol – self guided
- Such a Life – Wednesday & Saturday (12.30pm & 2pm)
- Cameos – Tuesday & Thursday
- Scary & weird stories - everyday
- Watch house Experience – Everyday (every 30mins – 12 sessions)
- Ned Kelly CRD – 5 Sessions



NATIONAL TRUST



OLD MELBOURNE GAOL
Crime & Justice Experience



NATIONAL TRUST



OLD MELBOURNE GAOL
Crime & Justice Experience





NATIONAL TRUST



OLD MELBOURNE GAOL
Crime & Justice Experience



MELBOURNE'S TALL SHIP STORY

Welcome Aboard Shipmates!

VELS levels 2-4, Yr 1 to Yr 6
Duration: 2 hrs+

Students are given a unique opportunity to step aboard a real 19th C tall ship and into the shoes of the sailors who lived and worked aboard. The First Mate guides students and "shows the ropes" aboard the 658 ton vessel.

The one hour facilitated sessions aboard ship include a range of hands-on activities and engaging experiences from using the capstan to hauling sails to scrubbing decks and learning the fine arts of navigation using a telescope and sextant.

The new Polly Woodside gallery includes a film about the dramatic first voyage of George Andrews, ship's carpenter in 1904, told in his own words.

Level 2: Blow the Man Down!

"With a wey-hey, blow the man down!" ... Students follow the Shanty man and explore the mysteries of who worked onboard the Polly Woodside, where they slept and ate, and what trades and skills were needed.

Level 3: Ship-shape and ready to sail

Students are assigned the role of a crew member. Various skills are learned and tested during the session including ringing the bell, raising the anchor, keeping watch, using a telescope, sextant and compass, furling a sail and steering the ship.

Level 4: Virtual Voyage 1895

Students prepare to undertake a voyage and must learn the skills needed to be a sailor. They also learn about maritime culture and the hardship of life at sea.

Price

\$7 per student. Teachers and carers free.
Combined Melbourne Aquarium package:
Take your school to the Melbourne Aquarium on the same day and receive \$1 discount off school admission per student.

Group Size

The maximum group size is 80.
The minimum group size is 20.

How to get there

The Polly Woodside is located between the Yarra River and the Melbourne Convention and Exhibition Centre, Clarendon Street, Melbourne.

Bookings/Contact

phone: 8663 7260
email: bookings@natrtrust.com.au
web: www.pollywoodside.com.au
Teachers kits available online include class activities.

Come aboard for a maritime adventure!



Come aboard for a maritime adventure!



RIPPON LEA

House AND Gardens

Yr 1 – 6

VELS mapped for Yr 2-4

Session Duration: 4 Hours + lunch recess

One of Australia's largest surviving 19th C grand suburban estates, Rippon Lea's mansion and gardens include a lake, waterfall, grotto, a lookout tower, huge fernery and the original Victorian era kitchens and laundry.

Kindergarten program

A full day program (10.00am – 2.30pm) of story readings, art activities, the Creature Catcher trail and games for your group.

Primary Program

Ideal for "Then & Now" programs and for an insight into how Australians lived in the past. A full day program includes a Time Machine adventure, mansion tour, experience the life of a servant, play 19th C games and sports and follow the Creature Catcher trail through the Gardens.

Price

\$9 per student. (Carers and Teachers are free)

Group size

Maximum group size is 60.

How to get here

Main Entrance at 192 Hotham Street, Elsternwick.
Melways Reference: 67E2

Bookings/Contact

phone 8663 7261

e-mail: bookings@natrtrust.com.au

web: www.ripponleaestate.com.au/education

Rippon Lea Outreach Program:

Mrs Sargood

Year: 2 – 5

Session Duration: Approx 50 minutes

Mrs Sargood, a 19th C mother of twelve, and homeschool teacher from Rippon Lea will run your classroom and show your students how children lived, studied, worked and behaved at home and at school in the past.

Students will take part in a 50 minute program in their own classroom that explores what school was like for Melbourne students during the Victorian Era. This exciting learning experience encourages inquiry, discussion and fun.

Students can...

Practice their maths skills with slate and chalk boards,

Test their writing skills with the use of nib pens and ink wells.

Learn about corporal punishment and the rules of a Victorian Classroom.

Explore and discuss what school life is like now compared to the past.

Learn about and handle Victorian Era classroom objects. (Note – this includes the use of ink nib pens.)

Booking your "Mrs Sargood"

phone: 8663 7263

e-mail: bookings@oldmelbournegaol.com.au

web: www.oldmelbournegaol.com.au

Price

Minimum booking: 1 session for max. 30 students
\$250 + \$80 per additional session at same school.

Additional fees apply for travel expenses dependent on distance.

Currently for Melbourne area only.

Ideal for Then & Now programs



Programs for your classroom!





NATIONAL TRUST



OLD MELBOURNE GAOL
Crime & Justice Experience



NATIONAL TRUST



OLD MELBOURNE GAOL
Crime & Justice Experience

Melbourne Rises to Top in Ranking of Best Cities

By ROBB M. STEWART

MELBOURNE—After almost a decade at the top, Vancouver has been bumped by Melbourne, Australia's second-largest city and home to two of the world's biggest mining companies, in a survey of the world's best cities in which to live.

Resource-rich Canada and Australia feature heavily in the top 10 of 140 cities ranked by the Economist Intelligence Unit, despite the rising cost of living driven in part by strong local currencies.

Melbourne nudged up one place in the semiannual survey by virtue of a slight fall in the western Canadian city's infrastructure score, the EIU said. That pushed Vancouver to third behind Vienna, Europe's highest-ranked city.

The result will bolster bragging rights for Melbourne, which retained its lead in the survey over Sydney, which advanced one spot to sixth. Australian cities Perth and Adelaide tied for eighth, rounding out the Pacific nation's top-placed cities.

Straddling the Yarra River, Melbourne boasts a European-style café culture of hidden coffee spots and restaurants as well as a passion for sport, including an annual Formula One grand prix, cricket, rugby and homegrown Aussie rules football. And while Western Australia and eastern Queensland host vast resources of iron ore and coal that drive the country's exports, Mel-

bourne is home to the world's largest mining company, BHP Billiton Ltd., the local offices of Rio Tinto PLC and numerous other resources companies.

"Australia, with a low population density and relatively low crime rates, continues to supply some of the world's most liveable cities," said Jon Copestake, editor of the survey.

The survey comes as the country is feeling the stresses of a mining boom that has caused a two-speed economy, leaving other industries struggling with a strong Australian dollar and the cheaper imports that come along with a stronger currency.

House prices have risen strongly over the past decade, yet new home sales dropped 8% in July to the lowest level since January 2000, according to figures this week from the Housing Industry Association.

Meanwhile, Vancouver can take solace from the fact that it slipped in its ranking primarily because of recent intermittent closures of the key Malahat highway, the EIU said. However, it added that rioting in June after the National Hockey League's Stanley Cup final between the Canucks and cup winner the Boston Bruins could see the city's score decline further in future surveys.

Cities are scored on political and social stability, crime rates and access to quality health care. The survey also measures the diversity and

Best City in the World | Global survey names Melbourne No. 1



Australia's second-largest city tops a survey of the world's best cities to live in. It ranked 140 cities (on a scale with 100 as the perfect score) by criteria that include political and social stability, crime rates, access to quality health care, diversity of cultural events, natural environment, education and infrastructure.

Source: Economist Intelligence Unit
Photo: Agence France Press/Getty Images

Country	City	Rank	Score	Country	City	Rank	Score
Australia	Melbourne	1	97.5	Japan	Tokyo	10	94.7
Austria	Vienna	2	97.4	China	Hong Kong	31	92.0
Canada	Vancouver	3	97.3	Singapore	Singapore	51	88.7
Canada	Toronto	4	97.2	U.K.	London	53	88.4
Canada	Calgary	5	96.8	U.S.	New York	56	86.6
Australia	Sydney	6	96.1	South Korea	Seoul	58	85.9
Finland	Helsinki	7	96.0	China	Beijing	72	76.9
Australia	Perth	8	95.9	Malaysia	Kuala Lumpur	78	74.0
Australia	Adelaide	8	95.9	Thailand	Bangkok	102	65.0
New Zealand	Auckland	10	95.7	India	New Delhi	112	58.6

standard of cultural events and the natural environment; education; and the standard of infrastructure, in-

cluding public transport. Honolulu was the highest-ranked U.S. city at 26th place, followed by

Pittsburgh at 30th. Harare, Zimbabwe, remained the lowest-ranked city.



