

USING INTERACTIVE WEBSITES TO ENGAGE COMMUNITIES IN HERITAGE



Heritage Resources Centre
Centre des ressources du patrimoine

Kayla Jonas
Thursday October 13, 2011
Heritage Canada Conference, Victoria

OUTLINE

- **Why Online Engagement?**
- **Three Examples of Websites Used to Engage Communities**
 - **West Montrose Cultural Heritage Landscape**
 - **Canadian Built Heritage Research Inventory**
 - **Building Stories**
- **Factors of Success**
- **Challenges**
- **Contact Information**

ONLINE ENGAGEMENT

Why should you consider online engagement?

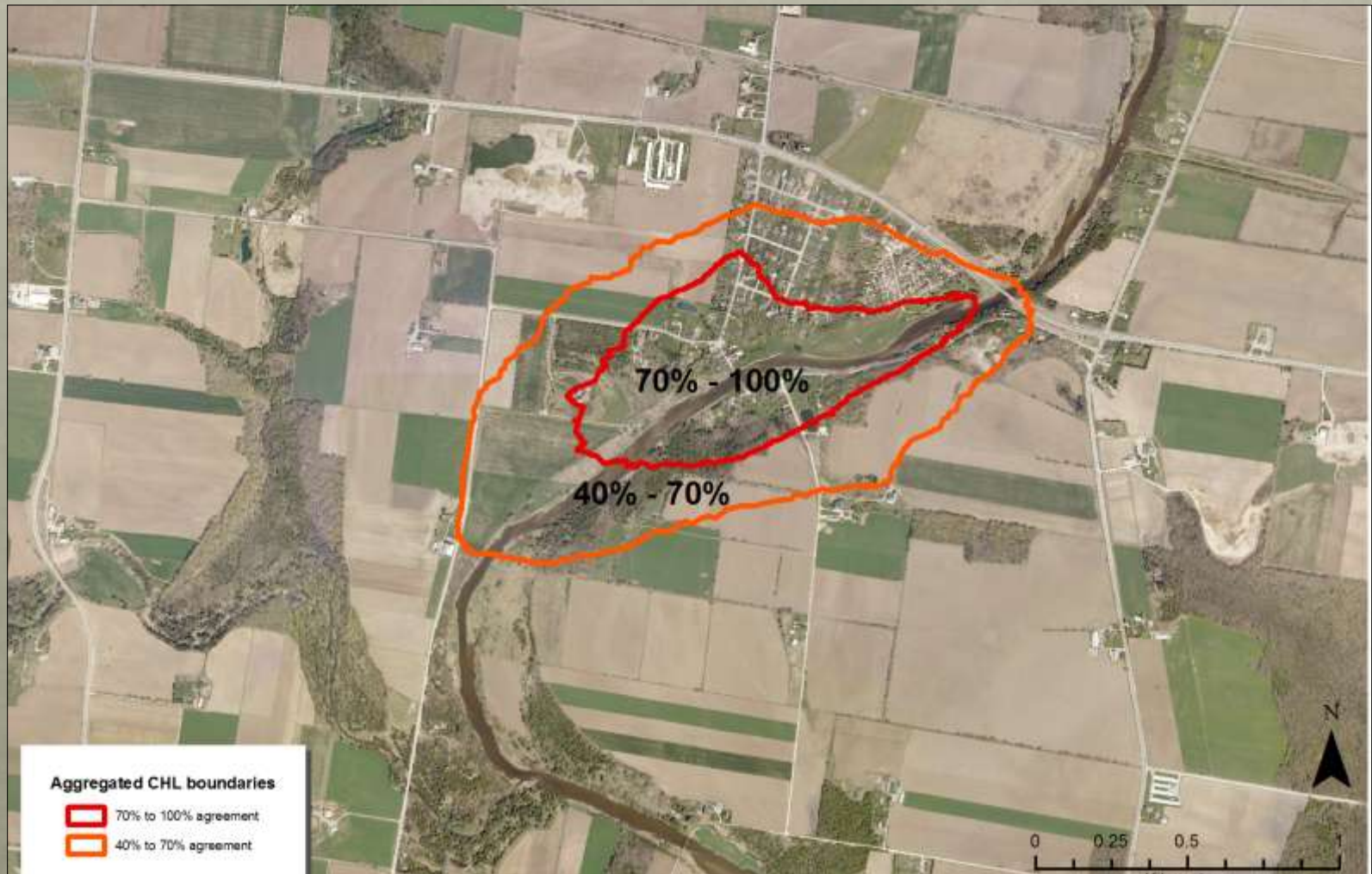
- **Wider audience (e.g. geographically)**
- **Participation on people's own time**
- **Compete for interest in local, provincial and national issues**

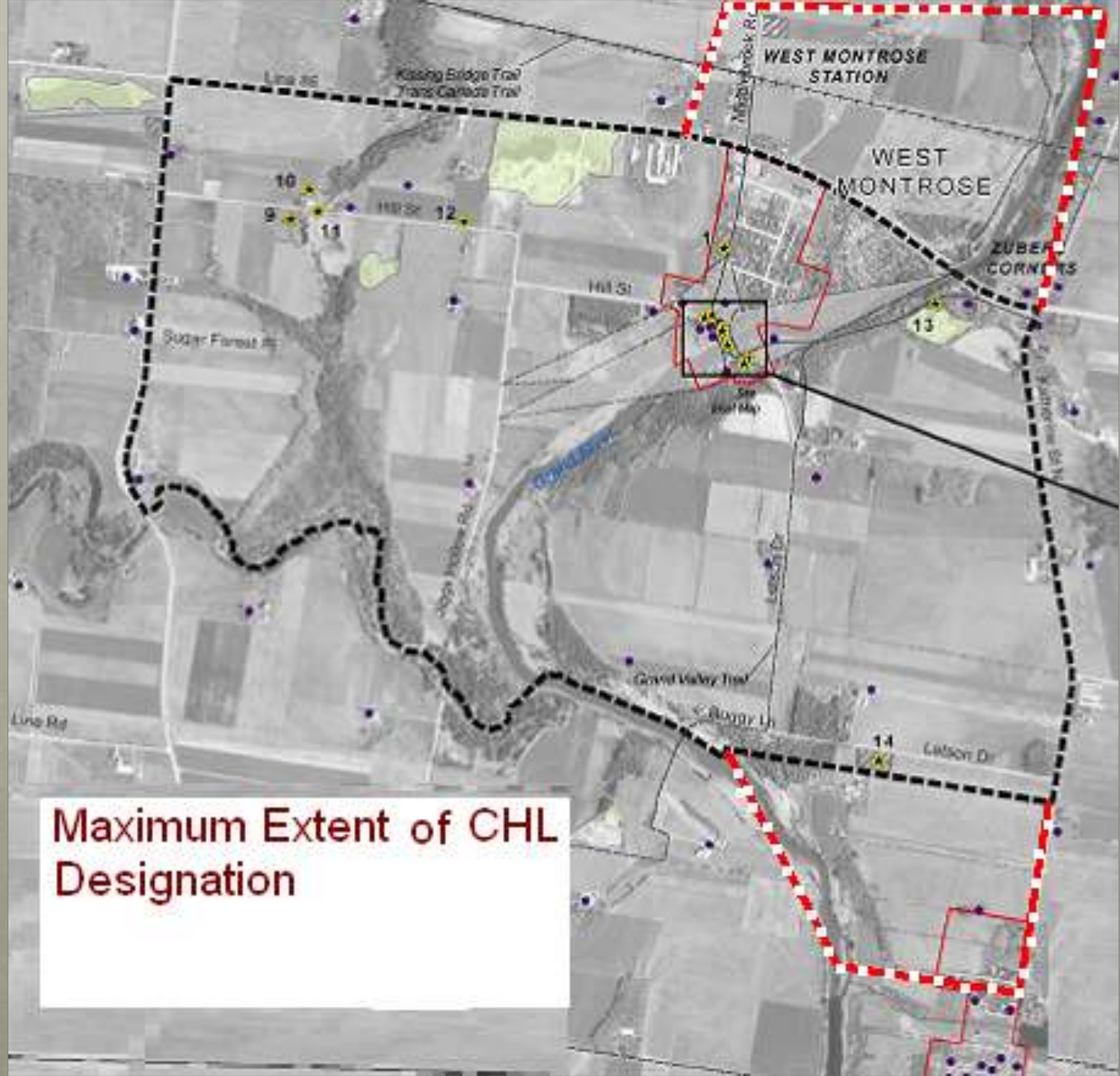
WOOLWICH TOWNSHIP- WEST MONTROSE

- Purpose built website to gain input on a potential Cultural Heritage Landscape
- Area centres on the West Montrose Covered Bridge
- Located in Woolwich, Ontario



RESULTS





**Maximum Extent of CHL
Designation**

BUILT HERITAGE RESEARCH INVENTORY

WATERLOO | ENVIRONMENT
HERITAGE RESOURCE CENTRE

Canadian Built Heritage Research Inventory

[HRC Home](#)

[About the Heritage
Resources Centre](#)

[Projects](#)

[Research](#)

[Workshops](#)

[People in the HRC](#)

[Links](#)

[Faculty of
Environment Home](#)

[Introduction.](#) [Browse records.](#)

Search: for in

- All Reference Types
- Book, Edited
- Book, Section
- Book, Whole
- Conference Proceedings
- Dissertation/Thesis
- Dissertation/Thesis, Unpublished
- Generic
- Journal Article
- Journal, Electronic

Page 1 of 30 (Items 1 to 50 of 1498) [2](#) [3](#) [4](#) [5](#) [»](#) [»»](#)

Sort results by [[Title](#)] [[Author](#)] [[Year](#)] [[Reference Type](#)]

Newton, Michael. (1979). "Maplelawn;" the Thomas-Cole-Rochester House, 529 Richmond Road, Ottawa, Ontario: A History 1831-1979. Ottawa.

Reference type: Book, Whole. [View details.](#)

Riegl, Aloïs. (1984 [1903]). , Le culte moderne des monuments. Son essence, sa genèse. Paris: Seuil. 125 p.

Reference type: Book, Edited. [View details.](#)

Campbell, Charles. 2007 Summary: Active 18 in Planning Land. Active 18.

http://active18.org/releases/report-2007-summary/WQW_2007_Summary.pdf

Reference type: Web Page. [View details.](#)

Lerner & Williamson. (1991). A Bibliography of Art and Architecture in Canada. Toronto: University of Toronto Press.

Reference type: Book, Whole. [View details.](#)

Hall, Robert de Zouche, Sir. (1972). A Bibliography of Vernacular Architecture. Newton Abbot: David & Charles.

Reference type: Book, Whole. [View details.](#)

RESEARCH

- Searchable
- Can link to the whole report
- Almost 1500 entries, 700 are in French

WATERLOO | ENVIRONMENT
HERITAGE RESOURCE CENTRE

Canadian Built Heritage Research Inventory

[Introduction.](#) [Browse records.](#)

Parks Canada, Athena Institute. (2009). A Life Cycle Assessment Study of Embodied Effects for Existing Historic Buildings.
http://www.athenasmi.org/publications/docs/Athena_LCA_for_Existing_Historic_Buildings.pdf

Reference Type: Report

Title, Primary: A Life Cycle Assessment Study of Embodied Effects for Existing Historic Buildings

Authors, Primary: Parks Canada

Authors, Secondary: Athena Institute

Publication Year: 2009

Links: www.athenasmi.org/publications/docs/Athena_LCA_for_Existing_Historic_Buildings.pdf

[Add an annotation.](#)

[Browse records.](#)

INTERACTIVE

- Public can add entries (hrcinfo@uwaterloo.ca)
- Public can also add annotations

WATERLOO | ENVIRONMENT
HERITAGE RESOURCE CENTRE

Canadian Built Heritage Research Inventory

[Introduction.](#) [Browse records.](#)

(1985). Conservation of heritage resources in the Yukon. [Ottawa, Ont.]: Environment Canada.

Reference Type: Book, Whole

Title, Primary: Conservation of heritage resources in the Yukon

Keywords: National parks and reserves Yukon Congresses;Wilderness areas Yukon Congresses;Parks Government policy Yukon Congresses

Notes: ID: 140

Publisher: Environment Canada

Place Of [Ottawa, Ont.]

Publication:

Publication Year: 1985

Call Number: CA1 CP 86H30 (UW Porter. Gov. Pubs. Stacks. 5th Floor); CA1 PC 86Y71 (WLU Government Documents - 3rd Floor)

[Add an annotation.](#)

[Browse records.](#)

BUILDING STORIES



- Online inventory for recognized and non-recognized historic places
- Use by general public, municipalities, community groups and professionals
- Currently in Ontario, launching March 2012
- Potential to go Canada-wide and mobile with additional funding

DISPLAYING SITES





**BUILDING
STORIES**

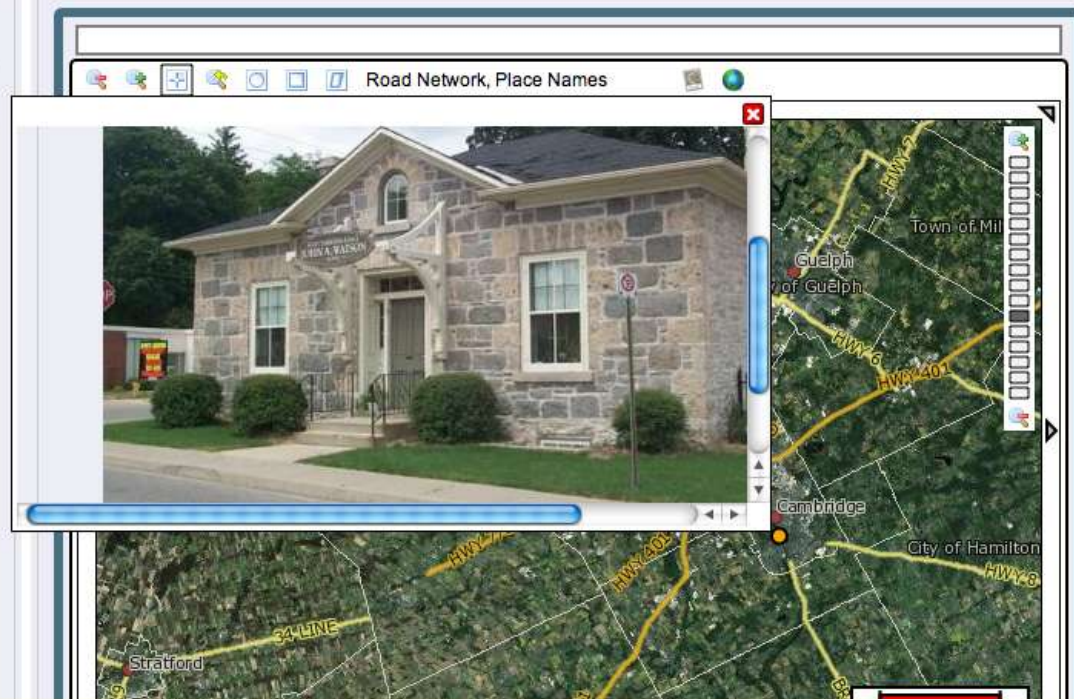
[Home](#) [Search](#) [Content](#) [My Network](#) [Forums](#) [Groups](#) [Search Network](#)

[PRINTABLE VERSION](#)

Welcome to BHMAP! This system is designed to inventory historic building, structures and sites across Canada. You can add a much or as little information as you have about a site or contribute to other entries. Use the search function to explore an area of interest or set up a tour route. If you have any question use the contact us section to send us an e-mail.

Displaying Entries 1 to 2 of 2

| Confidence Level ▲▼ | Historic Name: ▲▼ | Municipal Address ▲▼ | View Report ▲▼ | Group ▲▼ | Added By ▲▼ | Added ▲▼ |
|---------------------|----------------------|----------------------|---|--|---------------------------------|--------------------|
| A | John A. Watson House | 33 George Street |  | Heritage Resource Centre | contentadminone | September 16, 2011 |
| D | Test | Test |  | Test Community | TestUser | October 4, 2011 |



ADDING SITES



BUILDING
STORIES

[Home](#) [Search](#) [Content](#) [My Network](#) [Forums](#) [Groups](#) [Search Network](#)

[PRINTABLE VERSION](#)







[Add Content](#)
[Edit Content](#)
[My Content](#)
[Verify Content \(0\)](#)
[Request Content Verification](#)

Add a Built Heritage Site







[General Information](#) [Historic or Associative Value](#) [Design or Physical Value](#) [Context](#) [Characteristics](#) [Gallery of Documents](#) [Statement of Significance](#)

[Building Form](#) [Main Exterior Wall](#) [Roof Shape and Detail](#) [Typical Window](#) [Main Entrance](#) [Access](#) [Property Features](#)


Massing of Units

- | | | |
|--|---|--|
| <input type="radio"/>  Single Detached | <input type="radio"/>  Row Related | <input type="radio"/>  Attached Irregular |
| <input type="radio"/>  Double Semi-Detached | <input type="radio"/>  Row Non-Related | <input type="radio"/>  Other |

Plan

- | | | |
|--|---|---|
| <input type="radio"/>  Square/Rectangular | <input type="radio"/>  T | <input type="radio"/>  Cruciform |
| <input type="radio"/>  L | <input type="radio"/>  Irregular | <input type="radio"/>  Other |

Wings

- | | | |
|--|--|--|
| <input type="radio"/>  None | <input type="radio"/>  Both Sides | <input type="radio"/>  Rear and Side(s) |
|--|--|--|

MOBILE RESEARCH



FACTORS OF SUCCESS

- **By-in at conception**
- **Community testing**
- **Interactive**
- **Use with offline events**
 - **West Montrose – Events in community with paper maps**
 - **Database – Students add database annotations for class assignment**
 - **Building Stories – Planned workshops with communities**

CHALLENGES

- **Maintaining momentum**
- **Technological advances**
- **Public by-in**
- **Funding constraints**

CONTACT

Kayla Jonas, Heritage Planner

kajonas@uwaterloo.ca

www.env.uwaterloo.ca/research/hrc

www.heritageresourcescentre.blogspot.com

Twitter: @hrcheritage

Facebook: Heritage Resources Centre

519-888-4567 ext. 36921