

Elizabeth Erasito
Director, NTF
Executive Officer,
IUCN CEESP



Biodiversity Protection Fiji Islands & Rotuma



Fiji Islands

- EEZ -330 islands 1/3 are inhabited. 1.3 million sq.km
- Land area is 18,333 sq.km.
- 87.9% Indigenous iTaukei Land
- 3.9% State Land
- 7.9% Freehold Land
- 0.3% Rotuman Land
- Av Rainfall 200mm/yr (40 – 1100mm/yr)



Fiji

- Division boundary
- ★ National capital
- ⊙ Division capital
- Road

0 50 100 Kilometers
0 50 100 Miles

Rotuma
(administered by
EASTERN DIVISION)



SOUTH
PACIFIC
OCEAN





Fiji's Biodiversity

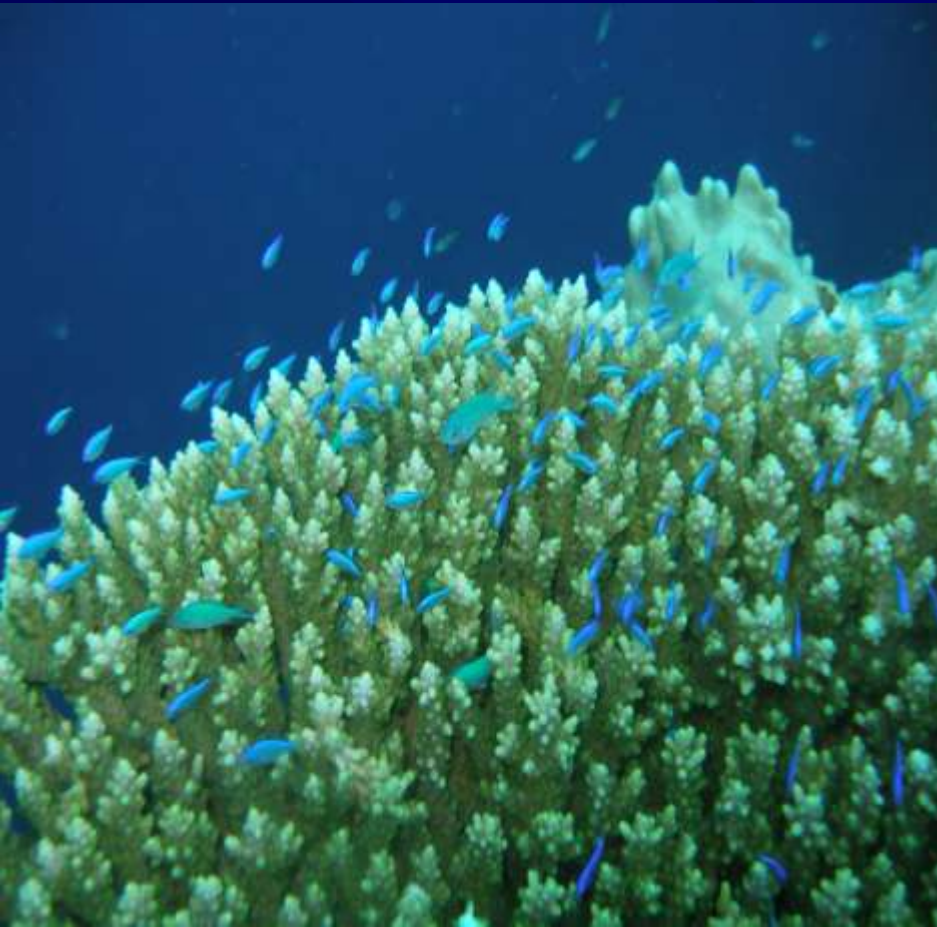


- Terrestrial biodiversity
 - blend of Gondwana and ocean drift taxa
- Rich island systems, unusual species
- High degree of endemism
- 40% intact forest remains
- Kadavu island -highest number of endemic land birds per land area in the world

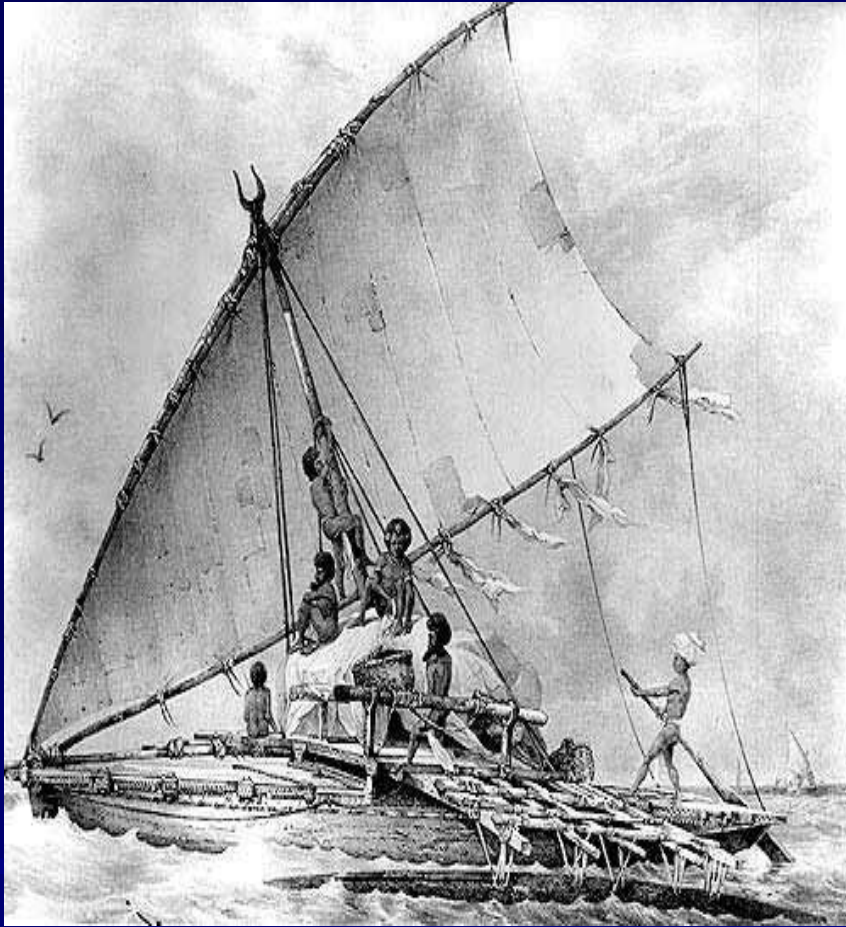


Marine Diversity

- 342 stony coral species
- ~1200 fish & lower invertebrates species
- Over ~760 species of gastropods
- 8 mangrove species
- 6 marine turtle species &
- 17 cetacean species in Fiji waters

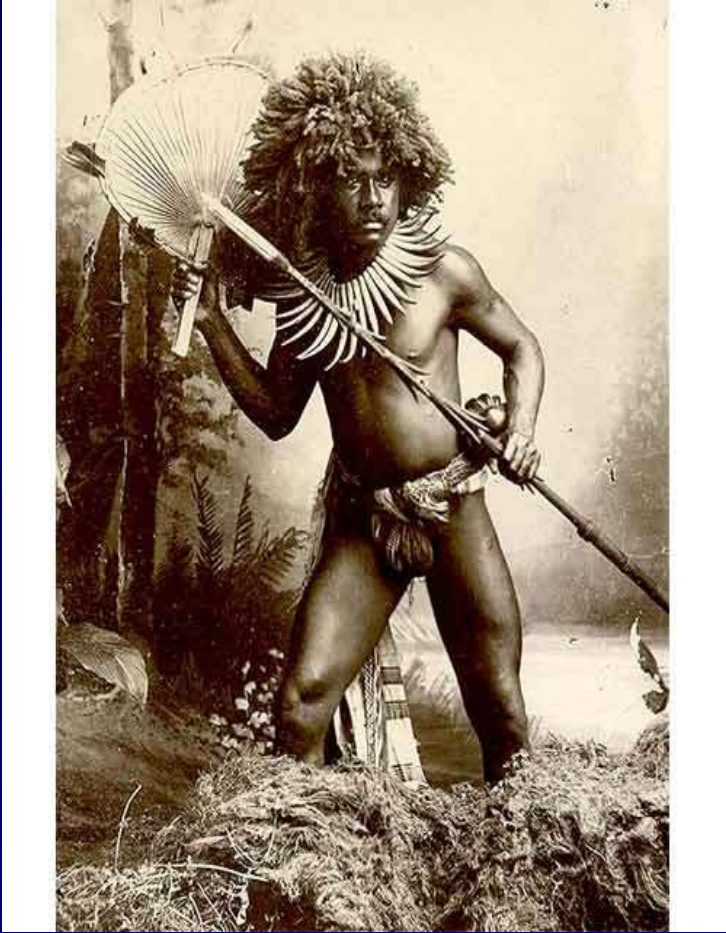


Vanua



- Land and people
- Past, present and future spiritual and genealogical relationships with their surroundings
- Kinship, polity, morality of sharing & togetherness
- Provider of resources, food from gardens, land and sea – today income from land/sea





- Vanua is not an alienable commodity for a land without people can be likened to a land without soul
- Thus it is not a system where the environment can be exploited without check bcs the people cannot be removed from the consequences of their exploitation (Ravuvu, 1988)







Locally Managed Marine Area (LMMA)

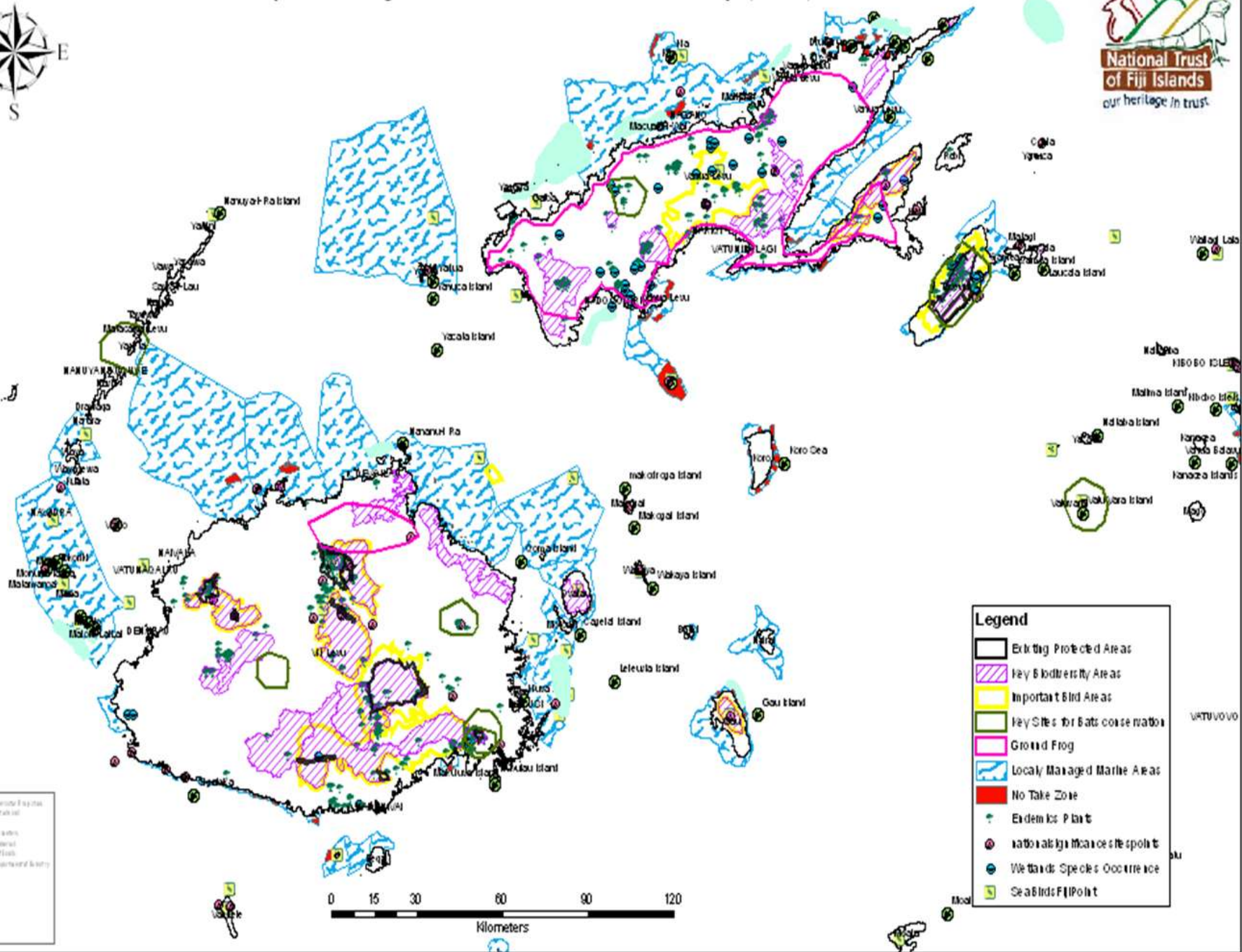
An area of near-shore waters and its associated coastal and marine resources that is largely or wholly managed at a local level by the coastal communities, land-owning groups, partner organizations, and/or collaborative government representatives who reside or are based in the immediate area.





In most cases, the impetus is a community desire to maintain or improve livelihoods where conservation and sustainable use are concepts already embedded in traditional environmental stewardship (Govan,2009).







“The LMMA process is not just about conservation. LMMA work strengthens our family and clan ties within the village. The process has really brought the community together when it hadn’t been before. We seemed to be apart doing work in the community, and when the LMMA Network came along, it strengthened our ties and enabled us to work together again...We found improvements in each community’s life regarding waste management as well as increasing fish populations.”

Samuela Tuidravu, Qoliqoli Macuata Cokavata Committee Secretary, Fiji





Rotuma Island

- 43 sq km 465km north of Fiji
- First sighted in 1791
- Annexed to Fiji in 1881
- Polynesian culture

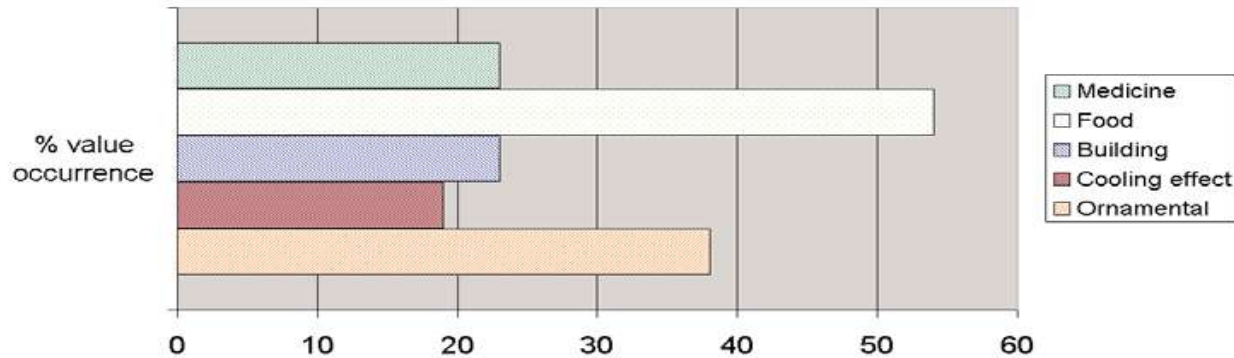




Forest Habitat

- Learning from elders
- Plant values, uses and occurrence

Figure 1. Shows the major plant uses and values (in percentage of occurrence) as observed during the bush walk @ Oinafa, Rotuma on the 11/12/07.





- Bird Watch
 - Identities
 - Food
 - Abundance
 - Locations





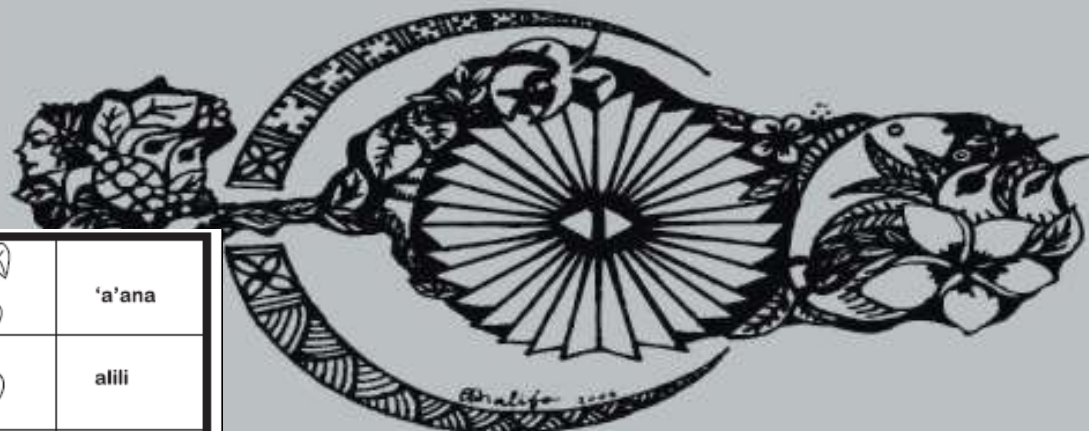
■ Reef
Profiling

■ Seagrass
Watch





Reflecting on Rotuma's Biodiversity: An Alphabetical Sketch Book



A



'a'ana



alili



'ahe



Armea, Rotuman Honeyeater





Rotuma – Amplifying Voices

- A lagoon story: resonating the voices of women and children in the advent of a changing climate on Rotuma Island



VINAKA & FAI'AKSIA

