



Come Heritage or High Water – the Calgary Flood, 2013





Bow River at Calgary (05BH004) River Data* - Apr. 01, 2013 - Nov. 01, 2013

■ Current Year ▲ Normal Range (Quartiles)



Government of Alberta



THE CITY OF
CALGARY
LAND USE PLANNING & POLICY




#YYCFLOOD JUNE 2013

1 THE FLOOD



The Bow river flows peaked at **2,400 m³/second**, **8x** the regular flow and more than **3x** the 2005 flood.



The Elbow river inflow peaked at **1,240 m³/second**, **12x** the regular rate and more than **3x** the 2005 flood.

Outflow below the Glenmore Dam was **700 m³/second**, about **7x normal** and about **2.5x** the 2005 flood.





THE CITY OF
CALGARY
LAND USE PLANNING & POLICY

Glenbow Archives NA-671-8



Glenbow Archives NA-2365-27

215. CENTRAL ST. BRIDGE. CALGARY.



THE CITY OF
CALGARY

LAND USE PLANNING & POLICY

Glenbow Archives NA-1451-39



Stampede Grounds Flood – June 1929



SOUTH RIVER FLOODS SUBSIDE AFTER HEAVY DAMAGE DONE

Glenmore Reservoir Checks Elbow's Rise; Bow Rages Over Banks

FLOOD SCENES AT NEW GLENMORE RESERVOIR



Flood Danger In High River Believed Over

Three Perish In Oklahoma City Floods

Waters of Canadian River inundated large section of Oklahoma City, Oklahoma, today, as a result of heavy rains which fell over the city and surrounding country during the night of June 2 and 3.

Creast of Mountain Torrents Reached Early Friday; Rivers Recede Steadily

The flood menace, which seriously threatened many sections of the city of Calgary Thursday night, is now for the time being at least. At noon, Friday, both the Bow river and the Elbow river were receding steadily, and hundreds of Calgarians, who were turned to woe as their homes in back the floods and across sides of the river during the night when flood waters from both rivers poured into their basements, were able to return Friday morning with only a minimum amount of damage done.

HAUSNER TAKES OFF ON SECOND OCEAN ATTEMPT

NEW YORK, June 3 (AP)—Richard Hausner, of Montreal, took his second attempt today to cross the Atlantic Ocean in a small, one-man boat.

KING-EMPEROR 67 YEARS OLD

BERLIN, June 3 (AP)—The king-emperor of Germany today celebrated his 67th birthday.

KING HOPES FOR PARLEY SUCCESS

LONDON, June 3 (AP)—King George VI today expressed his hope that the parley between the British and German governments would be successful.

STOCKS, BONDS SURGE UPWARD ON N.Y. MARKET

NEW YORK, June 3 (AP)—Stocks and bonds surged upward today on the New York market.

TRAIN KILLS 3 TRANSIENTS

ST. LOUIS, Mo., June 3 (AP)—A passenger train today killed three transient men in the city.

JOHN MCGRAW LEAVES GIANTS

PHILADELPHIA, June 3 (AP)—John McGraw today left the Philadelphia Phillies to join the New York Yankees.

Herald Business Office Will Close At 5 o'Clock Daily

The business office of the Herald will close at 5 o'clock daily.

The Broadcasting Station CFCF

The Calgary Daily Herald also broadcasts from CFCF.

MAYOR OF CHEBROURG GREETED MR. PUTNAM

CHEBROURG, N.Y., June 3 (AP)—The mayor of Chebroug today greeted Mr. Putnam.

Baseball Results

Baseball results from various games.

Farmers of Alberta Looking Forward to Heavy Wheat Yields

Calgarians, throughout the province, are looking forward to heavy wheat yields in Alberta.

RIVER MENACES LOWER SECTION OF DRUMHELLER

DRUMHELLER, June 3 (AP)—The river today menaced the lower section of Drumheller.

RESCUE 3 BOYS FROM ISLAND IN OLD MAN RIVER

LETHBRIDGE, June 3 (AP)—Three boys were rescued from an island in the Old Man River.

CAMPBELL HAS NARROW ESCAPE

SPRINGFIELD, June 3 (AP)—Campbell today had a narrow escape.

KIDNAP THREAT SENT MARLENE DIETRICH

BERLIN, June 3 (AP)—A kidnap threat was sent to Marlene Dietrich.

NAZI CO-OPERATION OFFERED BY HITLER

BERLIN, June 3 (AP)—Hitler today offered Nazi co-operation.

SPITALS IN CUSTODY ON REVOLVER CHARGE

SPITALS, June 3 (AP)—Spitals today were in custody on a revolver charge.

Just \$1.00

Advertisement for a product or service for \$1.00.

Data on Sun Spots Predicts More Rain in Western Canada

NEW YORK, June 3 (AP)—Data on sun spots today predicted more rain in western Canada.

Impossible as Yet To Estimate Damage Done To History of Town Old-Timers Report

OLD-TIMERS report that it is impossible as yet to estimate the damage done to the history of the town.

To Prepare West Case For Parley

WESTERN PREMIER'S WILL MEET AT OTTAWA ON JUNE 20

WATER COVERS CAMMORE ROAD

LANSING, Mich., June 3 (AP)—Water today covered Cammore Road.

The Weather PARTLY CLOUDY

Forecast for the day: Partly cloudy.

Fresh Water Right at the Front Door in High River



CALGARY HERALD

PROUDLY CALGARY SINCE 1883

Post-flood folk
fest will sound
a little
different



Quick Links: [Shopping](#), [Obituaries](#), [Horoscopes](#)

Search calgaryherald.com...

Classifieds

If you're just waking up, here's what you need to know

BY MEGHAN POTKINS, CALGARY HERALD JUNE 21, 2013

Recommend 29 | Tweet 24 | +1 1 | Print | Comment 4 | ShareThis

STORY PHOTOS (1)



Downtown Calgary feels more deserted on Friday, June 21, 2013, as people were advised to stay away from downtown due to possible flooding.

Photograph by: Tijana Martin, Calgary Herald

DOWNTOWN

Calgary's ordinarily bustling downtown core is a ghost town this morning as the city wakes to a plea from officials to stay away.

"Avoid all travel that is not absolutely necessary on Friday," said Mayor Naheed Nenshi in an early morning briefing.

"If you can stay home, stay home."

Welcome Google User

Here are more Calgary Herald topics related to your search for "calgary herald june 21 2013"

- Flood-hit homeowners warned about potential for identity theft
- 2010 study warned of more frequent flooding in Calgary
- Ontarians envious

STORY TOOLS

- E-mail this Article
- Print this Article
- Font: A A A A

SPOTLIGHTS

- Sign up for breaking news alerts
- Visit our Content Marketplace for Herald stories and pictures
- Join the conversation on the Herald's Facebook page
- Download the Herald's iPhone app
- Download the Herald's Android app
- Download the Herald's iPad app

2013 ELANTRA GT L MANUAL

SALE PRICE \$18,744

DOWN PAY \$90 B/W

COUNTRY HILLS HYUNDAI CHHYUNDAI.COM

DRIVING HIGHER STANDARDS 403-984-9696

2207 Country Hills Blvd NE Calgary, AB T3J 6R4

TOP PHOTOS



Celebrity justice:



Gallery: Canada's



Gallery: 25 celebrities



Gallery: Children of





THE CITY OF
CALGARY
LAND USE PLANNING & POLICY





Glenbow Archives NA-2063-3



Glenmore Dam during flood



THE CITY OF
CALGARY
LAND USE PLANNING & POLICY







THE CITY OF
CALGARY

LAND USE PLANNING & POLICY



THE CITY OF
CALGARY

LAND USE PLANNING & POLICY



FootHills
403-807-4741
ROYAL LEPAGE



THE CITY OF
CALGARY
LAND USE PLANNING & POLICY





THE CITY OF
CALGARY

LAND USE PLANNING & POLICY



THE CITY OF
CALGARY

LAND USE PLANNING & POLICY



THE CITY OF
CALGARY
LAND USE PLANNING & POLICY



yycCityHeritage
@yycCityHeritage

 Follow

Visiting flood hit historic resources. Enoch Sales looks ok but likely water on basement ow.ly/i/2spVy

 Reply  Retweet  Favorite  More



[View on web](#)

3
RETWEETS



9:42 AM - 26 Jun 13

Flag media



THE CITY OF
CALGARY
LAND USE PLANNING & POLICY

1919
SUNNYSIDE SCHOOL



© Marc Shandro
www.marshandro.com



THE CITY OF
CALGARY
LAND USE PLANNING & POLICY









THE CITY OF
CALGARY

LAND USE PLANNING & POLICY



CP



THE CITY OF
CALGARY
LAND USE PLANNING & POLICY



THE CITY OF
CALGARY
LAND USE PLANNING & POLICY



















THE CITY OF
CALGARY
LAND USE PLANNING & POLICY



THE CITY OF
CALGARY

LAND USE PLANNING & POLICY











THE CITY OF
CALGARY

LAND USE PLANNING & POLICY









THE CITY OF
CALGARY

LAND USE PLANNING & POLICY



CECIL HOTEL
COR. 3 ST E & 4TH AVE.

CALGARY
ALTA.



THE CITY OF
CALGARY
LAND USE PLANNING & POLICY





THE CITY OF
CALGARY

LAND USE PLANNING & POLICY







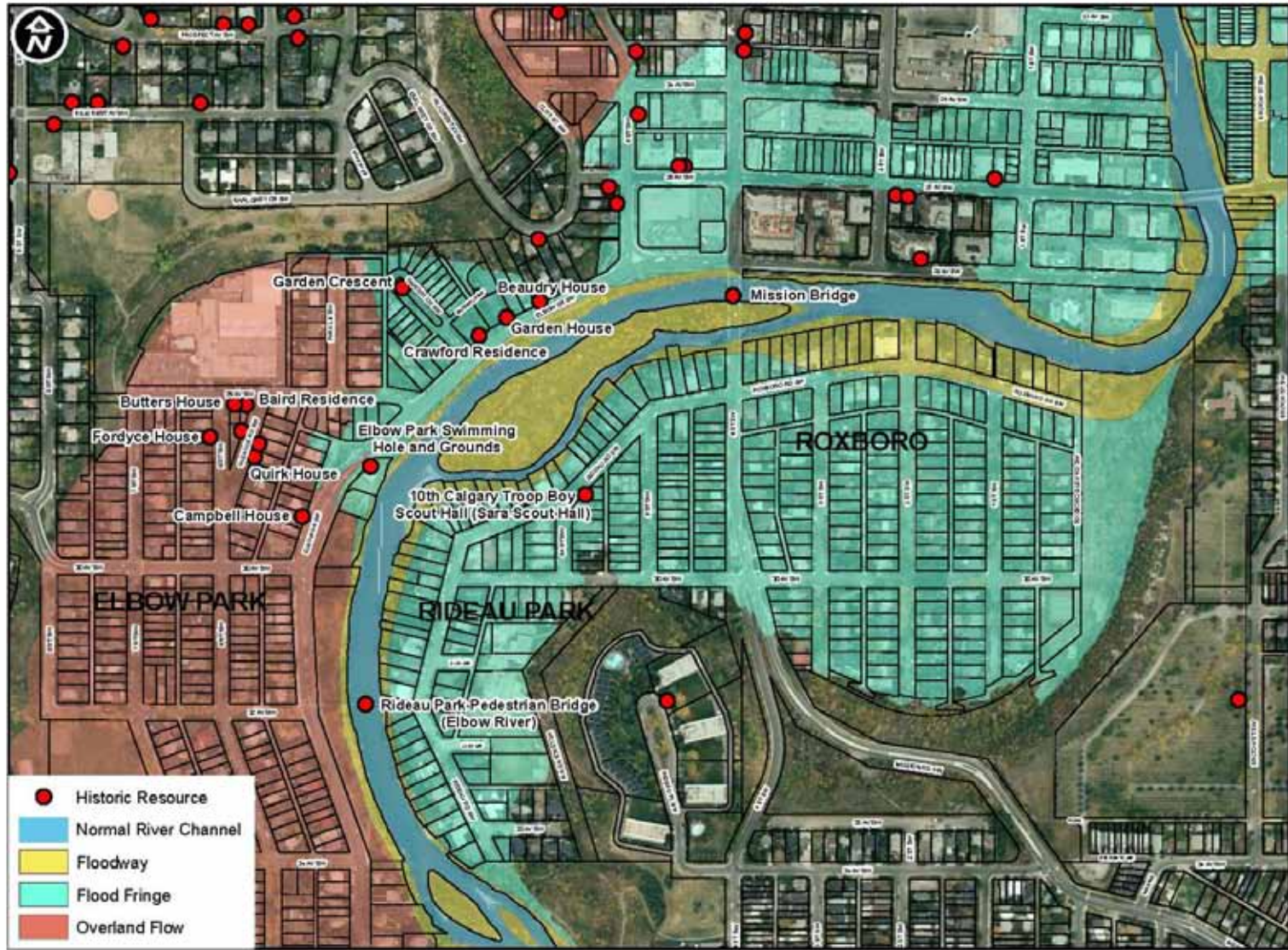


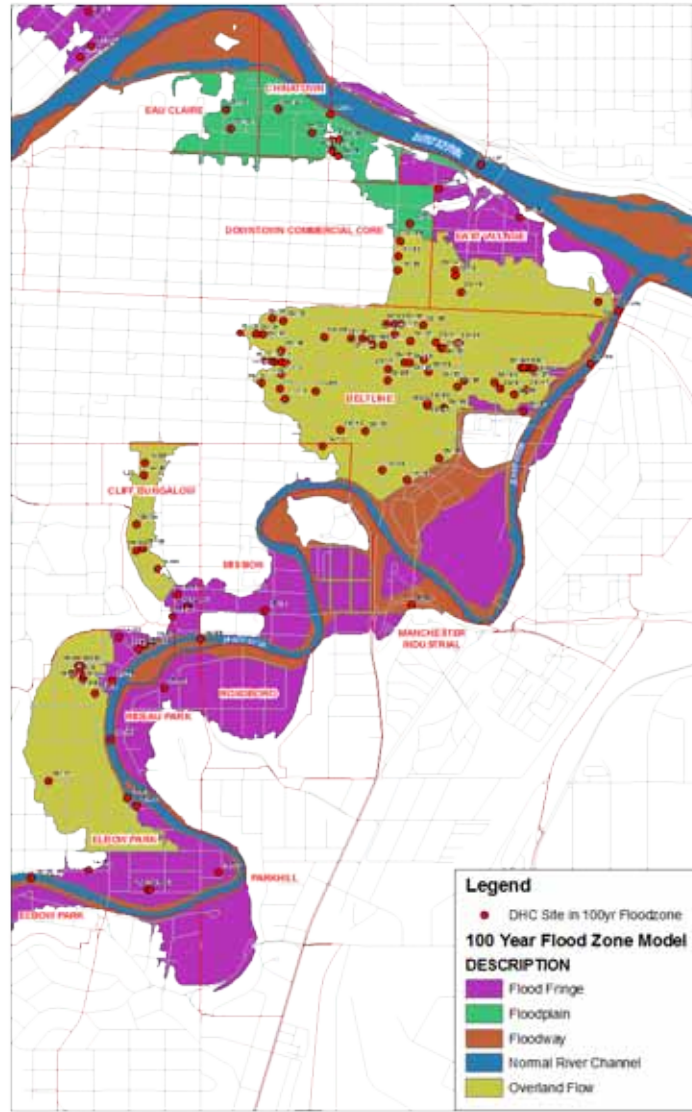


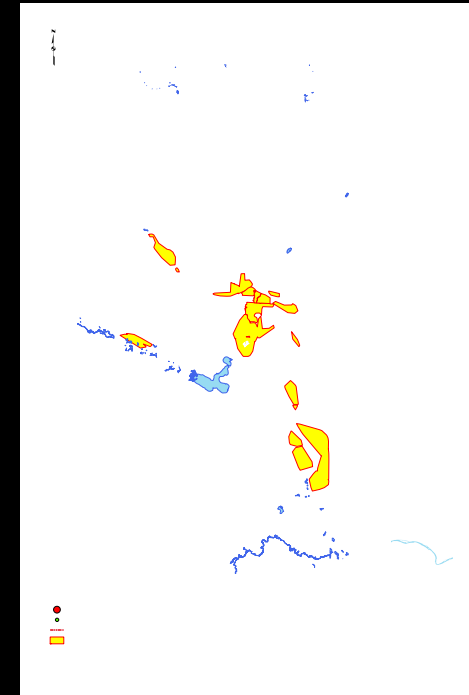
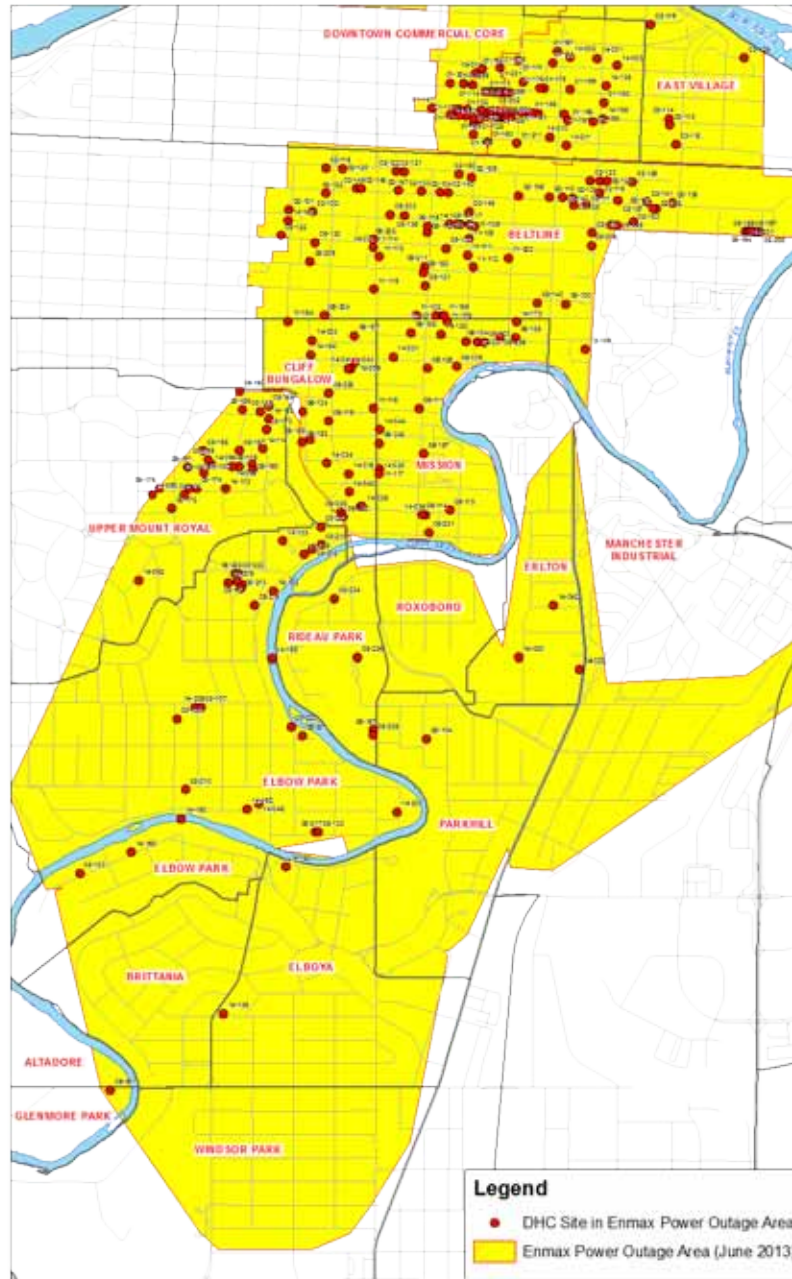
Caring for Alberta's Flood-Damaged Historic Buildings

A Presentation to the Calgary Heritage Roundtable, July 25, 2013
Eileen Fletcher, Heritage Conservation Advisor,
Historic Resources Management Branch, Alberta Culture









THINGS TO DO **BEFORE** YOU HAVE A DISASTER



THE CITY OF
CALGARY
LAND USE PLANNING & POLICY



BE PREPARED

the Boy Scout Motto has never failed me yet

www150.com



THE CITY OF
CALGARY
LAND USE PLANNING & POLICY

Business continuity

Mapping



Copyright © 2011, 2010, 2009, 2008, 2007, 2006, 2005, 2004, 2003, 2002, 2001, 2000, 1999, 1998, 1997, 1996, 1995, 1994, 1993, 1992, 1991, 1990, 1989, 1988, 1987, 1986, 1985, 1984, 1983, 1982, 1981, 1980, 1979, 1978, 1977, 1976, 1975, 1974, 1973, 1972, 1971, 1970, 1969, 1968, 1967, 1966, 1965, 1964, 1963, 1962, 1961, 1960, 1959, 1958, 1957, 1956, 1955, 1954, 1953, 1952, 1951, 1950, 1949, 1948, 1947, 1946, 1945, 1944, 1943, 1942, 1941, 1940, 1939, 1938, 1937, 1936, 1935, 1934, 1933, 1932, 1931, 1930, 1929, 1928, 1927, 1926, 1925, 1924, 1923, 1922, 1921, 1920, 1919, 1918, 1917, 1916, 1915, 1914, 1913, 1912, 1911, 1910, 1909, 1908, 1907, 1906, 1905, 1904, 1903, 1902, 1901, 1900, 1899, 1898, 1897, 1896, 1895, 1894, 1893, 1892, 1891, 1890, 1889, 1888, 1887, 1886, 1885, 1884, 1883, 1882, 1881, 1880, 1879, 1878, 1877, 1876, 1875, 1874, 1873, 1872, 1871, 1870, 1869, 1868, 1867, 1866, 1865, 1864, 1863, 1862, 1861, 1860, 1859, 1858, 1857, 1856, 1855, 1854, 1853, 1852, 1851, 1850, 1849, 1848, 1847, 1846, 1845, 1844, 1843, 1842, 1841, 1840, 1839, 1838, 1837, 1836, 1835, 1834, 1833, 1832, 1831, 1830, 1829, 1828, 1827, 1826, 1825, 1824, 1823, 1822, 1821, 1820, 1819, 1818, 1817, 1816, 1815, 1814, 1813, 1812, 1811, 1810, 1809, 1808, 1807, 1806, 1805, 1804, 1803, 1802, 1801, 1800, 1799, 1798, 1797, 1796, 1795, 1794, 1793, 1792, 1791, 1790, 1789, 1788, 1787, 1786, 1785, 1784, 1783, 1782, 1781, 1780, 1779, 1778, 1777, 1776, 1775, 1774, 1773, 1772, 1771, 1770, 1769, 1768, 1767, 1766, 1765, 1764, 1763, 1762, 1761, 1760, 1759, 1758, 1757, 1756, 1755, 1754, 1753, 1752, 1751, 1750, 1749, 1748, 1747, 1746, 1745, 1744, 1743, 1742, 1741, 1740, 1739, 1738, 1737, 1736, 1735, 1734, 1733, 1732, 1731, 1730, 1729, 1728, 1727, 1726, 1725, 1724, 1723, 1722, 1721, 1720, 1719, 1718, 1717, 1716, 1715, 1714, 1713, 1712, 1711, 1710, 1709, 1708, 1707, 1706, 1705, 1704, 1703, 1702, 1701, 1700, 1699, 1698, 1697, 1696, 1695, 1694, 1693, 1692, 1691, 1690, 1689, 1688, 1687, 1686, 1685, 1684, 1683, 1682, 1681, 1680, 1679, 1678, 1677, 1676, 1675, 1674, 1673, 1672, 1671, 1670, 1669, 1668, 1667, 1666, 1665, 1664, 1663, 1662, 1661, 1660, 1659, 1658, 1657, 1656, 1655, 1654, 1653, 1652, 1651, 1650, 1649, 1648, 1647, 1646, 1645, 1644, 1643, 1642, 1641, 1640, 1639, 1638, 1637, 1636, 1635, 1634, 1633, 1632, 1631, 1630, 1629, 1628, 1627, 1626, 1625, 1624, 1623, 1622, 1621, 1620, 1619, 1618, 1617, 1616, 1615, 1614, 1613, 1612, 1611, 1610, 1609, 1608, 1607, 1606, 1605, 1604, 1603, 1602, 1601, 1600, 1599, 1598, 1597, 1596, 1595, 1594, 1593, 1592, 1591, 1590, 1589, 1588, 1587, 1586, 1585, 1584, 1583, 1582, 1581, 1580, 1579, 1578, 1577, 1576, 1575, 1574, 1573, 1572, 1571, 1570, 1569, 1568, 1567, 1566, 1565, 1564, 1563, 1562, 1561, 1560, 1559, 1558, 1557, 1556, 1555, 1554, 1553, 1552, 1551, 1550, 1549, 1548, 1547, 1546, 1545, 1544, 1543, 1542, 1541, 1540, 1539, 1538, 1537, 1536, 1535, 1534, 1533, 1532, 1531, 1530, 1529, 1528, 1527, 1526, 1525, 1524, 1523, 1522, 1521, 1520, 1519, 1518, 1517, 1516, 1515, 1514, 1513, 1512, 1511, 1510, 1509, 1508, 1507, 1506, 1505, 1504, 1503, 1502, 1501, 1500, 1499, 1498, 1497, 1496, 1495, 1494, 1493, 1492, 1491, 1490, 1489, 1488, 1487, 1486, 1485, 1484, 1483, 1482, 1481, 1480, 1479, 1478, 1477, 1476, 1475, 1474, 1473, 1472, 1471, 1470, 1469, 1468, 1467, 1466, 1465, 1464, 1463, 1462, 1461, 1460, 1459, 1458, 1457, 1456, 1455, 1454, 1453, 1452, 1451, 1450, 1449, 1448, 1447, 1446, 1445, 1444, 1443, 1442, 1441, 1440, 1439, 1438, 1437, 1436, 1435, 1434, 1433, 1432, 1431, 1430, 1429, 1428, 1427, 1426, 1425, 1424, 1423, 1422, 1421, 1420, 1419, 1418, 1417, 1416, 1415, 1414, 1413, 1412, 1411, 1410, 1409, 1408, 1407, 1406, 1405, 1404, 1403, 1402, 1401, 1400, 1399, 1398, 1397, 1396, 1395, 1394, 1393, 1392, 1391, 1390, 1389, 1388, 1387, 1386, 1385, 1384, 1383, 1382, 1381, 1380, 1379, 1378, 1377, 1376, 1375, 1374, 1373, 1372, 1371, 1370, 1369, 1368, 1367, 1366, 1365, 1364, 1363, 1362, 1361, 1360, 1359, 1358, 1357, 1356, 1355, 1354, 1353, 1352, 1351, 1350, 1349, 1348, 1347, 1346, 1345, 1344, 1343, 1342, 1341, 1340, 1339, 1338, 1337, 1336, 1335, 1334, 1333, 1332, 1331, 1330, 1329, 1328, 1327, 1326, 1325, 1324, 1323, 1322, 1321, 1320, 1319, 1318, 1317, 1316, 1315, 1314, 1313, 1312, 1311, 1310, 1309, 1308, 1307, 1306, 1305, 1304, 1303, 1302, 1301, 1300, 1299, 1298, 1297, 1296, 1295, 1294, 1293, 1292, 1291, 1290, 1289, 1288, 1287, 1286, 1285, 1284, 1283, 1282, 1281, 1280, 1279, 1278, 1277, 1276, 1275, 1274, 1273, 1272, 1271, 1270, 1269, 1268, 1267, 1266, 1265, 1264, 1263, 1262, 1261, 1260, 1259, 1258, 1257, 1256, 1255, 1254, 1253, 1252, 1251, 1250, 1249, 1248, 1247, 1246, 1245, 1244, 1243, 1242, 1241, 1240, 1239, 1238, 1237, 1236, 1235, 1234, 1233, 1232, 1231, 1230, 1229, 1228, 1227, 1226, 1225, 1224, 1223, 1222, 1221, 1220, 1219, 1218, 1217, 1216, 1215, 1214, 1213, 1212, 1211, 1210, 1209, 1208, 1207, 1206, 1205, 1204, 1203, 1202, 1201, 1200, 1199, 1198, 1197, 1196, 1195, 1194, 1193, 1192, 1191, 1190, 1189, 1188, 1187, 1186, 1185, 1184, 1183, 1182, 1181, 1180, 1179, 1178, 1177, 1176, 1175, 1174, 1173, 1172, 1171, 1170, 1169, 1168, 1167, 1166, 1165, 1164, 1163, 1162, 1161, 1160, 1159, 1158, 1157, 1156, 1155, 1154, 1153, 1152, 1151, 1150, 1149, 1148, 1147, 1146, 1145, 1144, 1143, 1142, 1141, 1140, 1139, 1138, 1137, 1136, 1135, 1134, 1133, 1132, 1131, 1130, 1129, 1128, 1127, 1126, 1125, 1124, 1123, 1122, 1121, 1120, 1119, 1118, 1117, 1116, 1115, 1114, 1113, 1112, 1111, 1110, 1109, 1108, 1107, 1106, 1105, 1104, 1103, 1102, 1101, 1100, 1099, 1098, 1097, 1096, 1095, 1094, 1093, 1092, 1091, 1090, 1089, 1088, 1087, 1086, 1085, 1084, 1083, 1082, 1081, 1080, 1079, 1078, 1077, 1076, 1075, 1074, 1073, 1072, 1071, 1070, 1069, 1068, 1067, 1066, 1065, 1064, 1063, 1062, 1061, 1060, 1059, 1058, 1057, 1056, 1055, 1054, 1053, 1052, 1051, 1050, 1049, 1048, 1047, 1046, 1045, 1044, 1043, 1042, 1041, 1040, 1039, 1038, 1037, 1036, 1035, 1034, 1033, 1032, 1031, 1030, 1029, 1028, 1027, 1026, 1025, 1024, 1023, 1022, 1021, 1020, 1019, 1018, 1017, 1016, 1015, 1014, 1013, 1012, 1011, 1010, 1009, 1008, 1007, 1006, 1005, 1004, 1003, 1002, 1001, 1000, 999, 998, 997, 996, 995, 994, 993, 992, 991, 990, 989, 988, 987, 986, 985, 984, 983, 982, 981, 980, 979, 978, 977, 976, 975, 974, 973, 972, 971, 970, 969, 968, 967, 966, 965, 964, 963, 962, 961, 960, 959, 958, 957, 956, 955, 954, 953, 952, 951, 950, 949, 948, 947, 946, 945, 944, 943, 942, 941, 940, 939, 938, 937, 936, 935, 934, 933, 932, 931, 930, 929, 928, 927, 926, 925, 924, 923, 922, 921, 920, 919, 918, 917, 916, 915, 914, 913, 912, 911, 910, 909, 908, 907, 906, 905, 904, 903, 902, 901, 900, 899, 898, 897, 896, 895, 894, 893, 892, 891, 890, 889, 888, 887, 886, 885, 884, 883, 882, 881, 880, 879, 878, 877, 876, 875, 874, 873, 872, 871, 870, 869, 868, 867, 866, 865, 864, 863, 862, 861, 860, 859, 858, 857, 856, 855, 854, 853, 852, 851, 850, 849, 848, 847, 846, 845, 844, 843, 842, 841, 840, 839, 838, 837, 836, 835, 834, 833, 832, 831, 830, 829, 828, 827, 826, 825, 824, 823, 822, 821, 820, 819, 818, 817, 816, 815, 814, 813, 812, 811, 810, 809, 808, 807, 806, 805, 804, 803, 802, 801, 800, 799, 798, 797, 796, 795, 794, 793, 792, 791, 790, 789, 788, 787, 786, 785, 784, 783, 782, 781, 780, 779, 778, 777, 776, 775, 774, 773, 772, 771, 770, 769, 768, 767, 766, 765, 764, 763, 762, 761, 760, 759, 758, 757, 756, 755, 754, 753, 752, 751, 750, 749, 748, 747, 746, 745, 744, 743, 742, 741, 740, 739, 738, 737, 736, 735, 734, 733, 732, 731, 730, 729, 728, 727, 726, 725, 724, 723, 722, 721, 720, 719, 718, 717, 716, 715, 714, 713, 712, 711, 710, 709, 708, 707, 706, 705, 704, 703, 702, 701, 700, 699, 698, 697, 696, 695, 694, 693, 692, 691, 690, 689, 688, 687, 686, 685, 684, 683, 682, 681, 680, 679, 678, 677, 676, 675, 674, 673, 672, 671, 670, 669, 668, 667, 666, 665, 664, 663, 662, 661, 660, 659, 658, 657, 656, 655, 654, 653, 652, 651, 650, 649, 648, 647, 646, 645, 644, 643, 642, 641, 640, 639, 638, 637, 636, 635, 634, 633, 632, 631, 630, 629, 628, 627, 626, 625, 624, 623, 622, 621, 620, 619, 618, 617, 616, 615, 614, 613, 612, 611, 610, 609, 608, 607, 606, 605, 604, 603, 602, 601, 600, 599, 598, 597, 596, 595, 594, 593, 592, 591, 590, 589, 588, 587, 586, 585, 584, 583, 582, 581, 580, 579, 578, 577, 576, 575, 574, 573, 572, 571, 570, 569, 568, 567, 566, 565, 564, 563, 562, 561, 560, 559, 558, 557, 556, 555, 554, 553, 552, 551, 550, 549, 548, 547, 546, 545, 544, 543, 542, 541, 540, 539, 538, 537, 536, 535, 534, 533, 532, 531, 530, 529, 528, 527, 526, 525, 524, 523, 522, 521, 520, 519, 518, 517, 516, 515, 514, 513, 512, 511, 510, 509, 508, 507, 506, 505, 504, 503, 502, 501, 500, 499, 498, 497, 496, 495, 494, 493, 492, 491, 490, 489, 488, 487, 486, 485, 484, 483, 482, 481, 480, 479, 478, 477, 476, 475, 474, 473, 472, 471, 470, 469, 468, 467, 466, 465, 464, 463, 462, 461, 460, 459, 458, 457, 456, 455, 454, 453, 452, 451, 450, 449, 448, 447, 446, 445, 444, 443, 442, 441, 440, 439, 438, 437, 436, 435, 434, 433, 432, 431, 430, 429, 428, 427, 426, 425, 424, 423, 422, 421, 420, 419, 418, 417, 416, 415, 414, 413, 412, 411, 410, 409, 408, 407, 406, 405, 404, 403, 402, 401, 400, 399, 398, 397, 396, 395, 394, 393, 392, 391, 390, 389, 388, 387, 386, 385, 384, 383, 382, 381, 380, 379, 378, 377, 376, 375, 374, 373, 372, 371, 370, 369, 368, 367, 366, 365, 364, 363, 362, 361, 360, 359, 358, 357, 356, 355, 354, 353, 352, 351, 350, 349, 348, 347, 346, 345, 344, 343, 342, 341, 340, 339, 338, 337, 336, 335, 334, 333, 332, 331, 330, 329, 328, 327, 326, 325, 324, 323, 322, 321, 320, 319, 318, 317, 316, 315, 314, 313, 312, 311, 310, 309, 308, 307, 306, 305, 304, 303, 302, 301, 300, 299, 298, 297, 296, 295, 294, 293, 292, 291, 290, 289, 288, 287, 286, 285, 284, 283, 282, 281, 280, 279, 278, 277, 276, 275, 274, 273, 272, 271, 270, 269, 268, 267, 266, 265, 264, 263, 262, 261, 260, 259, 258, 257, 256, 255, 254, 253, 252, 251, 250, 249, 248, 247, 246, 245, 244, 243, 242, 241, 240, 239, 238, 237, 236, 235, 234, 233, 232, 231, 230, 229, 228, 227, 226, 225, 224, 223, 222, 221, 220, 219, 218, 217, 216, 215, 214, 213, 212, 211, 210, 209, 208, 207, 206, 205, 204, 203, 202, 201, 200, 199, 198, 197, 196, 195, 194, 193, 192, 191, 190, 189, 188, 187, 186, 185, 184, 183, 182, 181, 180, 179, 178, 177, 176, 175, 174, 173, 172, 171, 170, 169, 168, 167, 166, 165, 164, 163, 162, 161, 160, 159, 158, 157, 156, 155, 154, 153, 152, 151, 150, 149, 148, 147, 146, 145, 144, 143, 142, 141, 140, 139, 138, 137, 136, 135, 134, 133, 132, 131, 130, 129, 128, 127, 126, 125, 124, 123, 122, 121, 120, 119, 118, 117, 116, 115, 114, 113, 112, 111, 110, 109, 108, 107, 106, 105, 104, 103, 102, 101, 100, 99, 98, 97, 96, 95, 94, 93, 92, 91, 90, 89, 88, 87, 86, 85, 84, 83, 82, 81, 80, 79, 78, 77, 76, 75, 74, 73, 72, 71, 70, 69, 68, 67, 66, 65, 64, 63, 62, 61, 60, 59, 58, 57, 56, 55, 54, 53, 52, 51, 50, 49, 48, 47, 46, 45, 44, 43, 42, 41, 40, 39, 38, 37, 36, 35, 34, 33, 32, 31, 30, 29, 28, 27, 26, 25, 24, 23, 22, 21, 20, 19, 18, 17, 16, 15, 14, 13, 12, 11, 10, 9, 8, 7, 6, 5, 4, 3, 2, 1, 0, -1, -2, -3, -4, -5, -6, -7, -8, -9, -10, -11, -12, -13, -14, -15, -16, -17, -18, -19, -20, -21, -22, -23, -24, -25, -26, -27, -28, -29, -30, -31, -32, -33, -34, -35, -36, -37, -38, -39, -40, -41, -42, -43, -44, -45, -46, -47, -48, -49, -50, -51, -52, -53, -54, -55, -56, -57, -58, -59, -60, -61, -62, -63, -64, -65, -66, -67, -68, -69, -70, -71, -72, -73, -74, -75, -76, -77, -78, -79, -80, -81, -82, -83, -84, -85, -86, -87, -88, -89, -90, -91, -92, -93, -94, -95, -96, -97, -98, -99, -100, -101, -102, -103, -104, -105, -106, -107, -108, -109, -110, -111, -112, -113, -114, -115, -116, -117, -118, -119, -120, -121, -122, -123, -124, -125, -126, -127, -128, -129, -130, -131, -132, -133, -134, -135, -136, -137, -138, -139, -140, -141, -142, -143, -144, -145, -146, -147, -148, -149, -150, -151, -152, -153, -154, -155, -156, -157, -158, -159, -160, -161, -162, -163, -164, -165, -166, -167, -168, -169, -170, -171, -172, -173, -174, -175, -176, -177, -178, -179, -180, -181, -182, -183, -184, -185, -186, -187, -188, -189, -190, -191, -192, -193, -194, -195, -196, -197, -198, -199, -200, -201, -202, -203, -204, -205, -206, -207, -208, -209, -210, -211, -212, -213, -214, -215, -216, -217, -218, -219, -220, -221, -222, -223, -224, -225, -226, -227, -228, -229, -230, -231, -232, -233, -234, -235, -236, -237, -238, -239, -240, -241, -242, -243, -244, -245, -246, -247, -248, -249, -250, -251, -252, -253, -254, -255, -256, -257, -258, -259, -260, -261, -26

Treatment of Flood-Damaged Older and Historic Buildings

In recent years, many older and historic buildings have been affected by the heavy rains and flooding that occurred during hurricanes and tropical storms. The purpose of this booklet is to help building owners minimize structural and cosmetic flood damage. It contains general advice written to cover a wide variety of buildings with varying degrees of flood damage. If you suspect that your building may have some structural damage, contact a qualified structural engineer or architect to thoroughly assess the situation and suggest remedies. Your state historic preservation office (SHPO) can provide you with a list of architects who are experienced in the treatment of historic buildings.

A description of the tax credit programs for rehabilitation of historic structures, free technical publications available through your state historic preservation office and the Federal Emergency Management Agency (FEMA), telephone numbers you can call for more assistance, and additional resources are provided at the end of the booklet.

Once you are able to return to your building, the first tasks will likely be to remove mud and debris and to inspect the building for damage. Saving your building, no matter how historic, is not worth losing your life or risking permanent injury. Please observe these safety precautions:

- Do not walk through flowing water.
- Do not drive through a flooded area.

- Stay away from power lines and electrical wires.

- Make sure that all of your electrical wiring was submerged, have it inspected before turning the power back on.

- Look before you step. Floods deposit mud which makes most walking surfaces very slippery.

- Be alert for gas leaks.

- Carbon monoxide exhaust kills. If you use electrical generators or charcoal grills, make sure that they are properly vented.

- Clean everything that got wet. Floodwaters carry sewage and chemicals. Hose down concrete and masonry walls. Scrub all surfaces with disinfectant. Discard any food and medicine that came in contact with floodwater. Wear protective clothing and make sure the building is properly ventilated while working inside.

- Remember to follow local health guidelines concerning preventive shots or vaccinations.

After the Water Recedes

No other "element" is as destructive to buildings as water. After your building has been saturated and once the floodwaters recede, it is important that the drying process begin immediately. Most of the damaging effects of water, such as rot, mold, and spalling, can be minimized by reducing both interior and exterior moisture levels.

The least damaging drying process appears to be one that begins by using only ventilation. To speed evaporation, interior air must be vented to the outside. The most effective way to do this is to open windows and doors and allow the moisture to escape. Fans can be used to speed evaporation by moving interior air and exhausting humid air to the outdoors.

s Katrina and Rita.



Handbooks



THE CITY OF
CALGARY

LAND USE PLANNING & POLICY

Communication

Build a community of heritage stewards





BE PREPARED

the Boy Scout Motto has never failed me yet

www150.ca



THE CITY OF
CALGARY
LAND USE PLANNING & POLICY



THE CITY OF
CALGARY
LAND USE PLANNING & POLICY

